

# ***SOIL AND WATER CONSERVATION***

**MEGHALAYA**

# **ANNUAL REPORT**

**2004-2005**

**Contents:-**

	<b>Page</b>
<b>1. Preface</b>	<b>1</b>
<b>2. Introduction</b>	<b>2-3</b>
<b>3. Organizational set-up of the Soil &amp; Water Conservation Department.</b>	<b>4</b>
<b>4. Administrative set-up of the Soil &amp; Water Conservation Department</b>	<b>5-7</b>
<b>5. Manpower 2004-2005</b>	<b>8</b>
<b>6. Education &amp; Training</b>	<b>9-12</b>
<b>7. Establishment</b>	<b>13-14</b>
<b>8. Budget for the year 2004-2005</b>	<b>15</b>
<b>9. Achievements: Plan</b>	<b>16-19</b>
<b>10. Achievements: Non- Plan</b>	<b>20-21</b>
<b>11. Achievements under Schemes in general areas 2004 – 2005.</b>	<b>22-23</b>
<b>12. Achievements under Different Cash /Horticultural crop Development Works</b>	<b>24</b>
<b>13. Watershed Development Projects for Shifting Cultivation Areas (WDPSCA)</b>	<b>25-27</b>
<b>14. District- Wise Achievements Under Watershed Development Project in Shifting Cultivation Areas (WDPSCA) during 2004 – 2005.</b>	<b>28-31</b>
<b>15. New Scheme Proposals</b>	<b>32</b>
<b>16. RIDF IX NABARD LOAN</b>	<b>32-36</b>
<b>17. Integrated Wasteland Development Project (IWDP)</b>	<b>37-38</b>
<b>18. Condemnation of machineries during 2004-2005</b>	<b>39</b>
<b>19. Purchase of vehicles</b>	<b>39</b>
<b>20. Other Activities</b>	<b>40-43</b>

## P R E F A C E

This second edition of the Annual Report of the Soil & Water Conservation Department is an indication of the vigorous pursuance of the Department in the implementation of its projects and schemes. It is in fact, an updating exercise of the growing reach of the Department in so far as its role of developmental facilitator is concerned.

The Annual Report provides relevant information in terms of physical and financial achievements of the various activities and organizational set-up of the Department. A glance at the Report shows that a vibrant process of diversification in its concepts, policy matters and execution of works has taken place starting with the official incorporation of the word water in the nomenclature of the Department, participatory modes, local initiatives and empowerment. The main objective of this Report however, is not only to provide information but to project the role of the Department to a wider spectrum of society with a view to draw participation and co-operation from developmental agencies, conservationists, farmers, students and individuals who are striving for the common goal of natural resources conservation and management.

I take this opportunity to express my profound appreciation to all those who had a hand, in their various capacities, in the implementation of the schemes and projects of the Department. I also express my gratitude to different departments and agencies, the community leadership, stakeholders and general farmers who over the years been associated with the Department in the realization of all its endeavours.

Director of Soil & Water Conservation,  
Meghalaya, Shillong.

## **INTRODUCTION**

Against the backdrop of accelerated eco-degradation, the matter of natural resources conservation and management was further compounded by man-induced negative practices. The natural resources much affected by this are land, vegetation and water sources, which are vital to the survival of man.

To check eco-system degradation, the Soil and Water Conservation Department of Meghalaya was entrusted with the undertaking to formulate and implement a series of projects and schemes covering a wide gamut of activities that would ensure re-generation, conservation, management of the vital natural resources as well as initiating process for sustainable development.

### **Activities of the Department**

- Integrated Watershed management.
- Management of Jhum (Shifting Cultivation) through
  - Alternative farming systems.
  - Improving the productivity of Jhum areas
    - Reclamation of wastelands.
- Land Development – terracing, bunding, and reclamation of cultivable land.
- Streambank Erosion Control of cultivated and cultivable lands.
- Water Harvesting to harness rainwater and surface runoff for multipurpose uses.
- Water Conservation and Distribution by impounding water of streams and rivulets and subsequently distributing it to developed land.
- Afforestation of barren hillocks or degraded land by planting suitable tree species.
- Agro-forestry by growing tree species compatible with agricultural crops in agricultural land.
- Horticulture/Plantation Crops Development by growing of crops such as coffee, rubber, cashewnut, citrus, etc.
- Reclamation/Revitalization of Traditional Water harvesting structures.
- Training of farmers and other stakeholders.
- Creating Environmental Awareness.

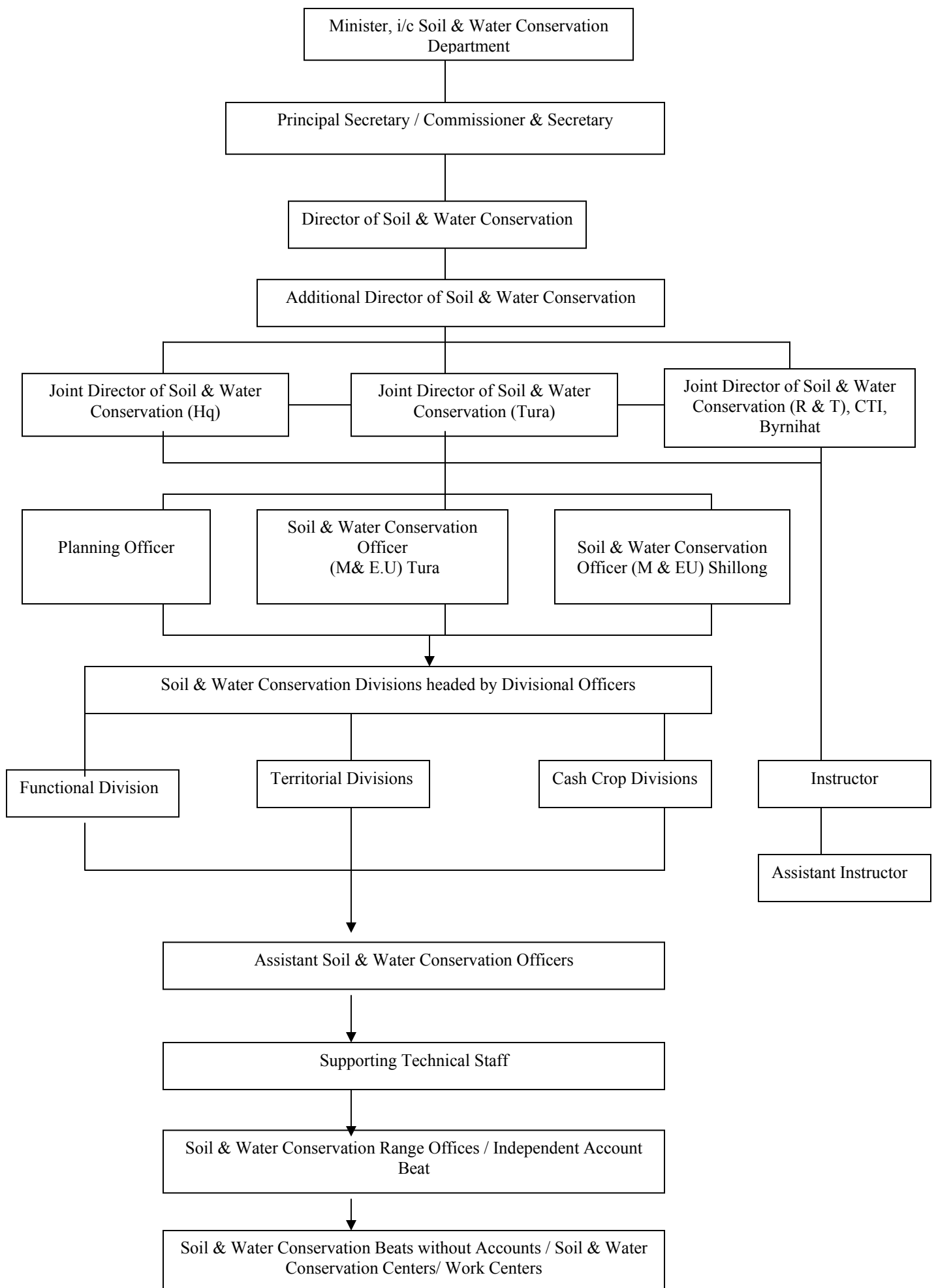
### **Strategy and Approach**

- Identify areas which require soil and water conservation interventions.
- Determine remedial measures in consultation with the affected community /individuals.
- Facilitate the implementation of the programmes by the community/ individuals by providing technical and financial support.
- Capacity Building for organizational and participatory skills at the grassroots level to enable stakeholders to take up proper planning, implementation, management, credit operation and evaluation of the projects.

### **The Department calls for-**

- Co-operation and participation from village communities and individuals.
- Willingness of the community /individuals to maintain and protect the assets created

**ORGANISATIONAL SET-UP OF THE SOIL AND WATER CONSERVATION  
DEPARTMENT**



## ADMINISTRATIVE SET-UP OF THE DEPARTMENT

### Directorate

- Planning
- Engineering
- Survey
- Project Formulation
- Cartography
- Monitoring & Evaluation
- Extension & Publicity

### Joint Directorates

Research & Training, Conservation Training Institute, Byrnihat  
Jhum Control, Tura

## FIELD EXECUTIVES

In the field the works of the Department are executed by the Territorial and the Cash Crop Divisions supported by the Soil and Water Conservation Ranges and Soil and Water Conservation Beats-

### Name of Divisions

#### East Khasi Hills

##### **Shillong Soil and Water Conservation Territorial Division**

- Southern Soil and Water Conservation Range, Mawphlang.
- Shillong Soil and Water Conservation Range, Shillong.
- Laitlyngkot Soil and Water Conservation Range, Laitlyngkot.
- Watershed Management Soil and Water Conservation Range, Shillong.
- Weiloil Soil and Water Conservation Beat Office, Weiloil.
- 

##### **Shillong Soil and Water Conservation Cash Crop Division**

- Shillong Soil and Water Conservation Cash Crop Range, Shillong.

### Jaintia Hills :

##### **Jaintia Hills Soil and Water Conservation Territorial Division.**

- Jowai Soil and Water Conservation Range, Thadlaskein.
- Khliehriat Soil and Water Conservation Range, Khliehriat.
- Lumshnong Soil and Water Conservation Range, Lumshnong.
- Amlarem Soil and Water Conservation Range, Amlarem.
- Watershed Management Soil and Water Conservation Range, Jowai.

##### **Jaintia Hills Soil and Water Conservation Cash Crop Division.**

- Amlarem Soil and Water Conservation Cash Crop Range, Amlarem.
- Lumshnong Soil and Water Conservation Cash Crop Range, Lumshnong.
- Namdong Soil and Water Conservation Cash Crop Range, Namdong.

West Khasi Hills :

**Nongstoin Soil and Water Conservation Division.**

- Mawkyrwat Soil and Water Conservation Range, Mawkyrwat.
- Sonapahar Soil and Water Conservation Range, Riangdo.
- Mairang Soil and Water Conservation Range, Mairang.
- Border Areas Soil and Water Conservation Range, Ranikor.
- Nongstoin Soil and Water Conservation Range, Nongstoin.
- Watershed Management Soil and Water Conservation Range, Nongstoin.
- Sonapahar C.C. Beat Office, Sonapahar.

Ri-Bhoi :

**Ri-Bhoi Soil and Water Conservation Division.**

- Northern Soil and Water Conservation Range Nongpoh.
- Western Soil and Water Conservation Range Patharkhmah.
- Marngar Soil and Water Conservation Cash Crop Range, Marngar.
- Umroi Soil and Water Conservation Beat Office Umroi.
- Sonidan Soil and Water Conservation Range, Sonidan.

West Garo Hills :

**Tura Soil and Water Conservation Territorial Division.**

- Baghmara Soil and Water Conservation Range, Baghmara.
- Southern Soil and Water Conservation Range, Machangpani.
- Central Soil and Water Conservation Range, Thebronggre.
- Anogre Soil and Water Conservation Range, Anogre.
- Damjonggre Soil and Water Conservation Range, Garobadha.
- Jongchipara Soil and Water Conservation Range, Jongchipara.
- Watershed Management Soil and Water Conservation Range, Tura

**Tura Soil and Water Conservation Cash Crop Division.**

- Danakgre Soil and Water Conservation Cash Crop Range, Danakgre.
- Ampati Cash Crop Soil and Water Conservation Beat Office, Ampati.
- Dadengre Cash Crop Soil and Water Conservation Beat Office, Dadenggre.

East Garo Hills :

**Simsanggre Soil and Water Conservation Division.**

- Northern Soil and Water Conservation Range, Wageasi.
- Eastern Soil and Water Conservation Range, Songzak Bonegre.
- Mendipathar Soil and Water Conservation Range, Mendipathar.
- Williamnagar Soil and Water Conservation Cash Crop Range, Williamnagar.
- Wageasi Cash Crop Range, Wageasi.
- Bajengdoba Cash Crop Beat Office, Bajengdoba.
- Rongjeng Cash Crop Beat Office, Rongjeng.

- Kharkutta Cash Crop Beat Office, Kharkutta.
- Watershed Management Soil and Water Conservation Range, Williamnagar.
- Adolgre Beat Office, Adolgre.

South Garo Hills :

**South Garo Hills Soil and Water Conservation Cash Crop Division.**

- Baghmara Soil and Water Conservation Cash Crop Range, Baghmara.
- Chokpot Soil and Water Conservation Cash Crop Range, Chokpot.
- Rongara Soil and Water Conservation Cash Crop Beat Office, Rongara.



**MANPOWER 2004-2005**

Sl. No.	Name of Office	Class I Gazette d	Class II Gazette d	Class III	Ministrial Staff		Field Staff		Total
					Grade III (Nos.)	Grade IV (Nos.)	Grade III (Nos.)	Grade IV (Nos.)	
1	2	3	4	5	6	7	8	9	10
1	Directorate	5 Nos.	6 Nos.	2 Nos.	44	12	1	1	71 Nos.
2.	Jt. Director Tura	2 Nos.	1 No.	-	7	4	-	-	14 Nos.
3.	C.T.I.	5 Nos.	7 Nos.	8 Nos.	37	38	3	5	103 Nos.
4.	Shillong (T) Divn.	1 No.	4 Nos.	5 Nos.	50	24	34	12	130 Nos.
5.	Tura (T) Divn.	1 No.	4 Nos.	12 Nos.	99	41	53	-	210 Nos.
6.	Jowai (T) Divn.	1 No.	3 Nos.	6 Nos.	67	34	43	1	155 Nos.
7.	Nongstoin Divn.	1 No.	4 Nos.	7 Nos.	57	37	44	3	153 Nos.
8.	Simsanggre	1 No.	4 Nos.	5 Nos.	65	38	33	-	146 Nos.
9.	Shillong (CC)	1 No.	2 Nos.	4 Nos.	25	5	16	15	68 Nos.
10.	Tura (CC)	1 No.	2 Nos.	3 Nos.	35	6	47	-	94 Nos.
11.	Jowai (CC)	1 No.	1 No.	3 Nos.	11	6	16	4	42 Nos.
12.	Ri Bhoi	1 No.	1 No.	2 Nos.	20	13	29	-	66 Nos.
13.	Baghmara	1 No.	1 No.	1 No.	17	7	22	-	49 Nos.
14.	Soil Survey	1 No.	2 Nos.	5 Nos.	15	45	13	-	81 Nos.
15.	P.F.C.	1 No.	4 Nos.	5 Nos.	11	15	10	-	46 Nos.
16.	S & WC Engineering Divn	1 No.	-	2 Nos.	5	5	6	-	19 Nos.
	TOTAL :	25 Nos.	46 Nos.	70 Nos.	565	330	370	41	1447 Nos

## **EDUCATION AND TRAINING 2004-2005**

### **A. Training at Conservation Training Institute, Byrnihat:**

#### **1. Field Assistant Course**

In the 31<sup>st</sup> batch, 17 nos of trainees passed out on the 15<sup>th</sup> September 2004.

The on-going 32<sup>nd</sup> Batch of the 11 months Field Assistant Training Course which commenced from the 15<sup>th</sup> October 2004, has nos of Trainees.

2. The 4<sup>th</sup> Batch-Advance Training Course of Forester-I which is of 4 months duration i.e., from June 04-October 04 consisted of 8 nos trainees. They had successfully completed the course.

### **B. Training of Gazetted Officers:**

1. Shri K.L. Tariang, Director of Soil and Water Conservation, Shri A.Syiem, Joint Director of Soil and Water Conservation (Headquarter) and Shri. D.S.Kharsyntiew, Joint Director of Soil and Water Conservation (R & T) Conservation Training Institute, Byrnihat, attended the Workshop on Citizen's Charter organized by the Meghalaya Administrative Training Institute (MATI), Shillong at MATI Building from 5<sup>th</sup> to 7<sup>th</sup> May, 2004.
2. Following Officers attended the training course on "Application of plastic in Hill Agriculture organized by the Indian Council of Agricultural Research (ICAR) at Research Complex, Umroi Road, Umiam, Meghalaya from 8<sup>th</sup> to 11<sup>th</sup> June, 2004.
  1. Shri A.S.Kharlukhi, Assistant Soil Conservation Officer, Shillong Soil Conservation Division.
  2. Shri R.V.Jyrwa, Assistant Soil Conservation Officer, Ri Bhoi Soil Conservation Division.
  3. Shri Probin Rabha, Assistant Soil Conservation Officer, Simsanggre Soil Conservation Division.
  4. Shri G.A.Sangma, Assistant Soil Conservation Officer, Tura (T) Division.
  5. Shri D.K.Khonglah, Assistant Soil Conservation Officer, Jowai (T) Division.
3. Shri A.Syiem, Joint Director of Soil and Water Conservation (Headquarter) attended a training programme on "Utilization of IT Tools of Government for Middle Level Government Functionaries of North Eastern States from 28<sup>th</sup> June, 2004 to 2<sup>nd</sup> July, 2004. The training was organized by the DONER and conducted at NIC, Building, Shillong.
4. The Department deputed the following Assistant Soil Conservation Officers for attending the Training programme on "Participatory Watershed Management" held at National Institute of Rural Development, North Eastern Regional Centre, Guwahati from 28<sup>th</sup> June to 3<sup>rd</sup> July, 2004.
  1. Shri D.Challam, Assistant Soil Conservation Officer, Jowai Soil Conservation (T) Division.
  2. Shri K.K.Riahtam, Assistant Soil Conservation Officer, Shillong (T) Division.
  3. Shri A.S.Kharlukhi, Assistant Soil Conservation Officer, Shillong (T) Division.
  4. Shri H.R.Sangma, Assistant Soil Conservation Officer, Office of the Joint Director, Tura.
5. Smti. I. Nongkhlaw, Assistant Soil and Water Conservation Officer, Project Formulation Cell, Shillong and Smti. M.Diengdoh, Assistant Soil and Water Conservation Officer (Cartography), Directorate of Soil Conservation, Shillong, attended a training course on R.D. Functionaries of the North Eastern State through the intervention of Information Technology at SIRD, Nongsder from 12<sup>th</sup> to 17<sup>th</sup> July, 2004.
6. Shri K.W.Marbianiang, Divisional Soil and Water Conservation Officer, Shillong (T) and Shri S.K.Sangma, Divisional Soil and Water Conservation Officer, Tura (T), attended a training programme on "Project Planning, Evaluation and Management" at the Indian Institute of Management, Kolkata from 26<sup>th</sup> -30<sup>th</sup> July, 2004.
7. Shri D.Langstieh, Divisional Soil and Water Conservation Officer, Nongstoin Soil and Water Conservation Division attended a Workshop on E-Governance Master Plan at NIC Office, Shillong, on the 12<sup>th</sup> August, 2004.

8. The Department deputed the following Divisional Soil and Water Conservation Officers to attend a training programme on “Participatory Watershed Management with focused on Hariyali” at NIRD, Guwahati from the 13<sup>th</sup> to 18<sup>th</sup> September, 2004.
  1. Shri D.Langstieh, Divisional Soil & Water Conservation Officer, Nongstoin.
  2. Shri G.Kharmujai, Divisional Soil & Water Conservation Officer, Shillong (CC).
  3. Shri K.S.Thubru, Divisional Soil & Water Conservation Officer, Jowai (T).
  4. Shri F. Rynjah, Divisional Soil & Water Conservation Officer, Ri Bhoi.
  5. Shri S.A.Sangma, Divisional Soil & Water Conservation Officer, Simsanggre.
9. Shri K.C.Momin, Additional Director of Soil & Water Conservation, attended a workshop on “Developing Landslide Hazard Mitigation Strategy” held at Indian National Science Academy Hall, New Delhi on 22<sup>nd</sup> September, 2004.
10. Shri N.Das and Shri A.B.S. Swer, both Assistant Instructors, Conservation Training Institute, Byrnihat, attended a training course on Direct Training Skills (DTS) and Design of Training (DoT) respectively at Assam Administrative Staff College, Khanapara, from the 4<sup>th</sup> –15<sup>th</sup> October, 2004.
11. The Department deputed the following officers to attend a training course on “Database Management for RD Functionaries” at NIRD, Guwahati from 15<sup>th</sup> – 20<sup>th</sup> November, 2004.
  1. Shri D.Langstieh, Divisional Soil & Water Conservation Officer, Nongstoin.
  2. Shri K.W.Marbaniang, Divisional Soil & Water Conservation Officer, Shillong (T).
  3. Smti V.Papang, Divisional Soil & Water Conservation Officer, Jowai (CC).
  4. Shri S.Ch. Marak, Divisional Soil & Water Conservation Officer, Tura (CC).
  5. Shri L.N.Marak, Divisional Soil & Water Conservation Officer, Baghmara.
  6. Smti H.T.Lyngdoh, Assistant Soil & Water Conservation Officer, Shillong (CC).
12. Shri R.R.B.R.Thabah, Instructor, Conservation Training Institute, Byrnihat and Shri. O.T.Lyngwa, Assistant Soil and Water Conservation Officer, Directorate of Soil Conservation, Shillong, attended a training course on “Land Resource Evaluation and Land Use Planning using Remote Sensing and Geographical Information System” at the National Bureau of Soil Survey and Land Use Planning Regional Centre, Jorhat, Assam, from 1<sup>st</sup> to 21<sup>st</sup> December, 2004.
13. Shri. L.Shabong, Assistant Soil and Water Conservation Officer, Nongstoin Soil and Water Conservation Division, attended an Awareness Programme on the celebration of the Year for Scientific Awareness 2004, on the 14<sup>th</sup> December, 2004 at Pariong, as a resource person on the topic “Soil Management”.
14. Smti. S.Pohsnem, Assistant Soil and Water Conservation Officer, Project Formulation Cell and Smti. M.Diengdoh, Assistant Soil and Water Conservation Officer (Cartography), Directorate of Soil Conservation, Shillong, attended a workshop on “Communication Skills” at EEI, AAU, Jorhat, from 19<sup>th</sup> – 26<sup>th</sup> January, 2005.
15. Smti. I.Rynjah, Assistant Soil and Water Conservation Officer and Smti. P.P.Lyngdoh, Assistant Soil and Water Conservation Officer, attended a workshop on “Farm Journalism” at EEI, AAU, Jorhat, from 8<sup>th</sup> – 15<sup>th</sup> February, 2005.

#### **16. Training of Farmers, Self Help Groups (SHGs), etc.**

- a. On the 5<sup>th</sup> April, 2004, the Shillong Soil and Water Conservation (T) Division along with the Agriculture and the Horticulture Departments, organized a training programme at Umrynjah village under Umpling–Umrynjah Watershed (WDPSCA). Training was imparted on traditional methods of Maize, Tomato and Ground nut cultivation in which 50 nos of farmers from the Umpling-Umrynjah Watershed area attended.
- b. The office of the Divisional Soil and Water Conservation Officer, Jowai (T) Soil and Water Conservation Division conducted a Study Tour cum Field visit for the

farmers of Saphai, Priang, Khonshong, Biar, Khliehrangnah, Pasyih, Muthlong Rim and Thadmuthlong villages to RRTC-Umran, ICAR-Umiam and Umpling-Umrynjah Watershed areas from the 4<sup>th</sup> – 7<sup>th</sup> August, 2004. These villages fall under the Kupli Catchment Project.

- c. On the 14<sup>th</sup> September, 2004, the Nongstoin Soil and Water Conservation Division, West Khasi Hills, conducted an Exposure Trip for the members of various Watershed Association and Watershed Committee, including Field Functionaries and members drawn from various Self Help Groups (SHGs) formed under both IWDP and WDPSCA to Umpling-Umrynjah Watershed (WDPSCA) East Khasi Hills.
- d. On the 29<sup>th</sup> September, 2004, the Office of the Divisional Soil and Water Conservation Officer, Jowai Soil and Water Conservation (T) Division, conducted a one day Farmers' Training at the Farmer Training Centre of the Agriculture Department, Jowai. About 40 nos of Farmers drawn from 4 (four) Watershed Areas which falls under the Watershed Development Project in Shifting Cultivation Areas (WDPSCA) participated in the programme.
- e. On the 12<sup>th</sup> October, 2004, the Shillong (T) Soil and Water Conservation Division organized a one day Exposure trip-cum Training as part of skill upgradation for the Farming Community of Khadar Shnong Watershed (WDPSCA) to ICAR, Umroi, Ri-Bhoi. Altogether 51 farmers from 8 villages of Khadar Shnong attended the programme.
- f. On the 14<sup>th</sup> October, 2004, the Office of the Divisional Soil and Water Conservation Officer, Baghmara Soil and Water Conservation Cash Crop Division, South Garo Hills, organized a training programme for the members of Rompa Bisik, Rongme, Rongmai and Adap Chiring Watershed Committees at Ampangre village.
- g. On the 17<sup>th</sup> December, 2004, the Nongstoin Soil and Water Conservation Division, West Khasi Hills, organized a one day training programme on "Capacity Building" for the Umyiap and Kynhiew River Valley Project Implementation Committee members and Wahlawang Watershed Committee members under NABARD and IWDP projects respectively at the Office premises. Altogether 39 nos of trainees participated in the training and of these, five of them were women.
- h. On 3<sup>rd</sup> February, 2005, a one day training – cum-exposure trip to Rural Resource Training Centre, Umran, was made for members of 8 (eight) watersheds under IWDP. Altogether 95 members were taken on the trip.
- i. On 4<sup>th</sup> Feb, 2005, a one day exposure-cum-educational trip comprising of 47 members from 11 benefiting villages under Umyiap River Valley Project (NABARD) was made to Rural Resource Training Centre, Umran.

On the same day about 15 members of 8 benefiting villages under Kynhiew River Valley Project (NABARD) was also taken on an exposio trip to Rural Resource Training Centre, Umran to get first hand knowledge of the activities taken up there.
- j. On 8<sup>th</sup> February, 2005, a Farmer's Training was held at Kynrud for 94 Nos. hailing from Four villages of Lower Phansong, I.W.D.P. Shri D.Langstieh, Divisional Soil and Water Conservation Officer, Nongstoin, inaugurated the training as the Chief Guest.
- k. On 9<sup>th</sup> February, 2005, a farmer's Training was held at Maukorah for 146 nos. farmers of four villages under Upper Phansong I.W.D.P.
- l. On 11<sup>th</sup> Feb, 2005, a Farmers' Training Programme was held at Mawlyntriang under Umlangdi IWDP for three villages under this project.
- m. On 15<sup>th</sup> Feb, 2005, a Farmers' Training Programme was held at Nongmise for 94 nos. of farmers from 2 (two) villages under Nongmise IWDP.

- n. On 16<sup>th</sup> Feb, 2005, a one day Farmer's Training Programme was held at Rimardon where 134 numbers farmers of 6 (six) villages under Wahlawang (IWDP) attended.
- o. On 18<sup>th</sup> Feb, 2005, a one day Farmers' Training Programme for the Kynhiew River Valley Project (NABARD) was held at Khliehmawlieh.
- p. On 22<sup>nd</sup> Feb, 2005, a one day Farmers' Training Programme was held at Nongjri for 174 nos., of farmers under Parmawiong IWDP.
- q. On 24<sup>th</sup> Feb, 2005, a one day Farmers' Training Programme was held at Keori where 41 nos, of farmers from 4 villages under Keori-Nolirata IWDP attended.
- r. On 3<sup>rd</sup> March, 2005, a one day Farmers' Training Programme for members of 11 benefiting villages under Umyiap River Valley Project (Phase-II) (NABARD) was held at Madan Riewblei, Umiap.
- s. On 8<sup>th</sup> March, 2005, a one day Farmers' Training Programme was held at Mawphonsyiar for 163 nos., of farmers from 5 villages under Ummulieh IWDP.

#### **17. Others:-**

- a. Smti. U.Wanshong, L.D.Assistant, Directorate of Soil and Water Conservation, Shillong, attended training on Disciplinary Proceedings for the Staff of Heads of Department at MATI, Shillong.
- b. The Department deputed Soil and Water Conservation Demonstrators for participating in the training course on "Participatory Watershed Management for Field Level Government Functionaries" at SIRD, Nongsder. Altogether 22 nos., of SCD (Jr.I) from Shillong and Jowai Divisions attended the training.

### **ESTABLISHMENT**

**Retirement:** - Retirement from service under different categories of post.

1. Divisional Soil and Water Conservation Officer	-	1 no
2. Head Assistant	-	3 nos
3. Soil and Water Conservation Demonstrator (Sr)	-	1 no
4. Soil and Water Conservation Demonstrator (Jr II)	-	1 no
5. Soil and Water Conservation Field Worker	-	1 no
6. Rubber Tapper	-	1 no
7. Upper Division Assistant	-	1 no

#### **Expired while in Service:-**

1. Soil and Water Conservation Ranger	-	2 nos
2. Soil and Water Conservation Demonstrator (Jr)	-	1 no
3. Upper Division Assistant	-	1 no
4. Soil and Water Conservation Field Worker	-	1 no
5. Bulldozer operator	-	1 no
6. Power Tiller Operator	-	3 nos.
7. Tractor Driver	-	1 no.

#### **Appointment on Compassionate Ground:** -

Appointment on Compassionate ground in different categories of post.

1. Khalasi	-	1 no
------------	---	------

- |                    |   |        |
|--------------------|---|--------|
| 2. Plantation Mali | - | 1 no   |
| 3. Chowkidar       | - | 2 nos. |

**Transfer and Posting: -**

Transfers under different categories of post: -

- |   |   |        |
|---|---|--------|
| 1. Divisional Soil and Water Conservation Officer | - | 1 no   |
| 2. Assistant Soil and Water Conservation Officer  | - | 3 nos  |
| 3. Soil and Water Conservation Ranger             | - | 12 nos |
| 4. Soil and Water Conservation Demonstrator (Sr)  | - | 2 nos  |
| 5. Upper Division Assistant                       | - | 1 no.  |

**Promotion: -**

Promotion under different categories of post:-

- |   |   |        |
|---|---|--------|
| 1. Assistant Soil and Water Conservation Officer promoted to Divisional Soil Conservation Officer | - | 1 no   |
| 2. Soil and Water Conservation Ranger promoted to Assistant Soil and Water Conservation Officer   | - | 1 no   |
| 3. Soil and Water Conservation Demonstrator (Sr) promoted to Soil and Water Conservation Ranger   | - | 1 no   |
| 4. Accountant promoted to Head Assistant  | - | 4 nos  |
| 5. Upper Division Assistant promoted to Accountant  | - | 4 nos. |
| 6. Lower Division Assistant promoted to Upper Division Assistant                                  | - | 4 nos. |
| 7. Plantation mali promoted to Soil and Water Conservation Field Worker                           | - | 5 nos  |
| 8. Tractor Handyman promoted to Tractor Driver  | - | 1 no   |

**BUDGET FOR THE YEAR 2004 – 2005**

**(Rs. in lakhs)**

Head of Accounts	PLAN				NON - PLAN			
	General Areas		Sixth Schedule Areas		General Areas		Sixth Schedule Areas	
	Original	Revised	Original	Revised	Original	Revised	Original	Revised
2402-SOIL & WATER CONSER-VATION								
001 –	62.03	62.03	138.65	138.65	167.46	178.76	872.40	880.55
101 –	3.56	3.56	-	-	25.91	22.09	-	-
102 –	-	-	65.30	73.30	-	-	40.65	24.90
109 –	35.81	35.81	-	-	69.13	54.17	-	-
800 -	20.00	20.00	538.95	538.95	17.37	15.49	232.08	186.73
<b>Total – 2402</b>	<b>121.40</b>	<b>121.40</b>	<b>742.90</b>	<b>750.90</b>	<b>279.87</b>	<b>270.51</b>	<b>1145.13</b>	<b>1092.18</b>
2415 –								
004 –	0.70	0.70	-	-	14.75	14.72	0.25	-
2216 –								
700 –	-	-	5.00	5.00	3.00	2.88	24.00	20.24
<b>GRAND TOTAL</b>	<b>122.10</b>	<b>122.10</b>	<b>747.90</b>	<b>755.90</b>	<b>297.62</b>	<b>288.11</b>	<b>1169.38</b>	<b>1112.42</b>

**ABSTRACT (Revised Budget)**

a) GENERAL AREAS (PLAN)	Rs. 122.10
b) SIXTH SCHEDULE PART.II AREAS (PLAN)	Rs 755.90
<b>TOTAL PLAN</b>	<b>Rs 878.00</b>
c) GENERAL AREAS (NON-PLAN)	Rs 288.11
d) SIXTH SCHEDULE PART.II AREAS (NONPLAN)	Rs 1112.42
<b>TOTAL NON PLAN</b>	<b>Rs 1400.53</b>

**PHYSICAL & FINANCIAL ACHIEVEMENTS (PLAN) 2004 –2005.**

Sl. No.	Name of sector/sub- sector scheme	PHYSICAL ACHIEVEMENT	FINANCIAL ACHIEVEMENT (Rs. in lakhs)	Remarks
1	2	5	6	7
	2402-SOIL & WATER CONSERVATION 001- DIRECTION & ADMINISTRATION			
	(01) Directorate of Soil and Water Conservation	Pay & Allowances of staff	11.37	
	(02) Divisional Soil and Water Conservation Offices	Pay & Allowances of staff	68.42	
	(03) Soil and Water Conservation Range Offices	Pay & Allowances of staff	36.69	
	(04) Engagement of Apprentices	Pay & Allowances of staff	-	
	(05) Project Formulation Cell	Pay & Allowances of staff	3.82	
	(06) Soil and Water Conservation Engineering Division	Pay & Allowances of staff	24.33	
	(07) Monitoring and Evaluation Unit	Pay & Allowances of staff	7.78	
	(08) Cash Crop Division	Pay & Allowances of staff	31.60	
	(10) Soil and Water Conservation Survey Division	Pay & Allowances of staff	11.66	
	<b>TOTAL – 001</b>		<b>195.67</b>	
	<b>101- SOIL SURVEY AND TESTING</b>			
	(01) Soil and Water Conservation Survey Scheme	Pay & Allowances of staff		
	(02) Soil Testing Works	Pay & Allowances of staff	3.51	
	<b>TOTAL - 101</b>		<b>3.51</b>	
	<b>102- SOIL AND WATER CONSERVATION SCHEME</b>			
	(01) Terracing Works			
	(02) Reclamation of Valley Bottom Lands			
	(03) Follow up Programme			
	(04) Erosion Control Works	56 Nos.	18.70	
	(05) Camps & Camp Equipments			
	(06) Afforestation	Depttl. Sub M-485.5 47.875	7.86	
	(08) Water Conservation & Distribution Works/irrigation	44 ha.	10.96	
1	2	3	4	5
	(09) Cash/Horticultural Crops Development Works	Deptt. Sub. Horticulture. M-17 ha. – Cashewnut P – x 2.887 ha. M-2.55 ha. x Rubber M-45.12 ha. x Coffee M- 1 ha. x Black pepper M-1 ha. Nurseries P-59588 Nos. M-1091473 Nos.	24.09	
	(10) Conservation Works in Urban Areas.	-	-	
	(11) Water Harvesting Works/	44 Nos.	10.20	



	Farm ponds, etc.			
	<b>TOTAL – 102 -</b>		<b>71.81</b>	
	<b>109- EXTENSION &amp; TRAINING</b>			
	(01) Conservation Training Institute	Pay & Allowances of staff, office expenses and T.A.	7.29	
	(02) Training at Soil and Water Conservation Centre	Pay & Allowances of staff, office expenses and T.A.	25.63	
	(03) Extension Programme & Information Services	Pay & Allowances of staff, office expenses and T.A.	1.98	
	<b>TOTAL - 109 -</b>		<b>34.90</b>	
	<b>800- OTHER EXPENDITURE</b>			
	(01) Construction of approach roads to work areas	-		
	(02) Construction & Maintenance of Departmental Non-Residential Buildings	Part payment - 2 Nos. Extension - 1 No.	5.00	
	(03) Jhum Control Scheme			
	02. Cash/Horticultural Crops Development Works	<u>Deptt. Sub.</u> <u>Rubber</u> M-177.2 ha. x <u>Horticulture.</u> M-26.56 ha. 29.38 ha. <u>Cashewnut</u> M- x 41.64 ha. <u>Nurseries</u> M-477862 Nos.	20.00	
	08. Afforestation	<u>Deptt. Sub.</u> M-40.52 ha. x	0.51	
	<b>TOTAL – 800 (03)</b>		20.51	
	800-(04). WATERSHED MANAGEMENT			
	03. Afforestation	<u>Deptt. Sub.</u> M-139.17 ha. 68.34 ha.	2.00	
	04. Irrigation/Water Conservation & Distribution Works			
	05. Camps & Camp Equipments			
	09. Cash/Horticultural Crop Development Works	<u>Deptt. Sub.</u> <u>Horticulture.</u> P- x 3.06 ha. M-160.7 ha. 14.62 ha. <u>Cashewnut</u> M-30.55 ha. x <u>Rubber</u> M-10 ha. x <u>Nurseries</u> M-106176 Nos.	12.85	
	11. Erosion Control Works	-		
	12. Water Harvesting/Farm Ponds.	-		
	<b>TOTAL – 800 (04) -</b>		<b>14.85</b>	
	800-(06) Meghalaya Commercial Crops Development Board	Pay & Allowances	20.00	
	<b>TOTAL – 800 (06)</b>		<b>20.00</b>	
	800-(07)- SPECIAL CENTRAL ASSISTANCE ON WDPSCA.			
	01. Basic activities		21.67	
	07. Arable Land Treatment			
	(i) Contour bunding	416 ha.	15.42	
	(ii) Crop demonstration	282 units/75,000 r.m.	19.90	
	(iii) Peripheral bunding	200642 r.m./652.3 ha.	28.09	

	(iv) Agro-horticulture	C-1151 ha. M- 934.81 ha.	48.88	
	5. Improvement of Paddy field	292.82 ha.	14.21	
	2 (b) Non-Arable Land Treatment			
	1. Agro-Forestry	C- 152.9 ha. M- 122.2 ha.	33.70	
	2. Nursery	5950 Nos.	24.09	
	3. Improvement of natural forestry	C-345 ha. M-2212 ha.	25.57	
	4. Dry land.	C-327 ha. M- 325 ha.	16.97	
	2© Drainage Line Treatment			
	1. Spur/Gabion Structure/Irrigation channel	432 ha. or 16737 RM.	2.00	
	2. Small dug out ponds	393 ha. or 162 Nos.	8.10	
	3. Protection wall	122 ha. or 21 Nos.	5.04	
	4. Check dam	691 ha. or 86 Nos.	19.61	
	5. Water Harvesting Structures	670 ha. or 67 Nos.	16.75	
	<b>TOTAL – 800 (07)</b>		<b>300.00</b>	
	800-10- SOIL AND WATER CONSERVATION SCHEME UNDER NABARD LOAN.			
	01. Head work dams/Diversion Channel/Minor Irrigation	Dam – 110 Nos. Channels – 2 Nos.& 420 Rm.	50.56	
	02. Farm/Conservation pond, Water Harvesting Structures	30 Nos.	15.03	
	03. Erosion Control, Gabion, Check dams/retaining wall/Spurs.	115 Nos. & 25 RM.	62.34	
	04. Bench Terracing	136.13 ha.	53.39	
	05. Contour Bunding	9.8 ha.	4.70	
	06. Improvement of existing paddy field.		1.17	
	07. Training	17 Nos.	3.39	
	08. Improvement & Maintenance of Link Road	57 Km.	9.42	
	<b>TOTAL – 800 (10)</b>		<b>200.00</b>	
	<b>TOTAL – 800 -</b>		<b>560.36</b>	
	<b>TOTAL – 2402 –</b>		<b>866.25</b>	
	2415- AGRICULTURAL RESEARCH & EDUCATION			
	02- SOIL & WATER CONSERVATION			
	004- RESEARCH			
	01- Soil and Water Conservation Research Centre	Pay & allowances of staff including office expenses.	0.65	
	02. Field Trial & Experiment			
	<b>TOTAL – 2415 -</b>		<b>0.65</b>	
	2216-HOUSING			
	01- GOVT. RESIDENTIAL BUIDLING			
	700- OTHER HOUSING			
	58. Construction	3 Nos.	4.95	
	<b>TOTAL - 2216 :</b>		<b>4.95</b>	
	<b>GRAND TOTAL :</b>		<b>871.85</b>	

•  
P – Preliminary works  
M – Maintenance works

Deptt. – denotes Department  
Sub. – denotes Subsidy

**FINANCIAL ACHIEVEMENTS (NON-PLAN) 2004 –2005.**

Sl. No.	Name of sector/sub- sector scheme	Expenditures (Rs. in lakhs)	Remarks
1	2	3	4
	<b>2402-SOIL &amp; WATER CONSERVATION</b>		
	<b>001- DIRECTION &amp; ADMINISTRATION</b>		
	(01) Directorate of Soil and Water Conservation	79.91	
	(02) Divisional Soil and Water Conservation Offices	236.22	
	(03) Soil and Water Conservation Range Offices	365.33	
	(04) Engagement of Apprentices	-	
	(05) Project Formulation Cell	52.13	
	(06) Soil and Water Conservation Engineering Division	1.94	
	(07) Monitoring and Evaluation Unit	0.14	
	(08) Cash Crop Division	174.92	
	(09) Watershed Management Division	110.81	
	(10) Soil and Water Conservation Survey Division	37.91	
	<b>TOTAL – 001</b>	<b>1059.31</b>	
	<b>101- SOIL SURVEY AND TESTING</b>		
	(02) Soil and Water Conservation Survey Scheme	21.02	
	(02) Soil Testing Works	1.07	
	<b>TOTAL - 101</b>	<b>22.09</b>	
	<b>102- SOIL AND WATER CONSERVATION SCHEME</b>		
	(02) Reclamation of Valley Bottom Lands		
	(03) Follow up Programme		
	(04) Erosion Control Works	1.65	
	(05) Camps & Camp Equipments	-	
	(06) Afforestation	22.39	
	(08) Water Conservation & Distribution Works/irrigation	-	
	(09) Cash/Horticultural Crops Development Works	-	
	(10) Conservation Works in Urban Areas.	0.39	
	(11) Water Harvesting Works/Farm ponds, etc.	0.47	
	<b>TOTAL – 102 -</b>	<b>24.90</b>	
	<b>109- EXTENSION &amp; TRAINING</b>		
	(01) Conservation Training Institute	30.99	
	(02) Training at Soil and Water Conservation Centre	23.18	
	(03) Extension Programme & Information Services	-	
	<b>TOTAL - 109 -</b>	<b>54.17</b>	
	<b>800- OTHER EXPENDITURE</b>		
	(02) Construction of approach roads to work areas	6.01	
	<b>TOTAL : 800 : (01) :</b>	<b>6.01</b>	
	(02) Construction & Maintenance of Departmental Non-Residential Buildings	15.53	
	<b>TOTAL : 800 : (02) :</b>	<b>15.53</b>	
	(03) Jhum Control Scheme		
	01. Terracing Works	5.69	
	02. Cash/Horticultural Crops Development Works	126.31	
	07. Cultivation & Inter Cultural Works	33.23	
	08. Afforestation		
	09. Irrigation/Water Conservation & Distribution Works	0.20	
	10. Camp & Camp Equipments	1.21	
	12. Link Roads	1.07	
	13. Drinking Water	0.11	
	<b>TOTAL – 800 (03)</b>	<b>167.82</b>	
	<b>800-(04). WATERSHED MANAGEMENT</b>		
	02. Terracing Works	0.19	
	03. Afforestation	3.06	
	04. Irrigation/Water Conservation & Distribution Works	-	
	05. Camps & Camp Equipments	6.43	
	09. Cash/Horticultural Crop Development Works	3.18	
	11. Erosion Control Works		
	12. Water Harvesting/Farm Ponds.		
	<b>TOTAL – 800 (04) -</b>	<b>12.86</b>	

	<b>TOTAL – 800 -</b>	<b>202.22</b>	
	<b>TOTAL – 2402 –</b>	<b>1362.69</b>	
	2415- AGRICULTURAL RESEARCH & EDUCATION 02- SOIL & WATER CONSERVATION 004- RESEARCH		
	01- Soil and Water Conservation Research Centre	14.72	
	02. Field Trial & Experiment		
	<b>TOTAL – 2415 -</b>	<b>14.72</b>	
	2216-HOUSING 01- GOVT. RESIDENTIAL BUIDLING 700- OTHER HOUSING		
	02. Maintenance & Repairs	23.12	
	<b>TOTAL - 2216 :</b>	<b>23.12</b>	
	<b>GRAND TOTAL :</b>	<b>1400.53</b>	

**Achievements under Schemes in general areas 2004 – 2005.**  
**(Schemes taken up in individual land/community land/ village land but**  
**outside specific project areas / selected watersheds)**  
**(Rs. in lakhs)**

Name of Division / Range	(04) Stream Bank Erosion Control Works		(08) Water Conservation & Distribution Works		(II) Water Harvesting Works / Farm ponds	
	No. of Structures	Amount	No. of Structures	Amount	No. of Structures	Amount
1	2	3	4	5	6	7
<b><u>A. Shillong (T) Division</u></b>						
1. Shillong S & WC Range	3 Nos	0.50	2 Nos	0.41	3 Nos	0.40
2. Mawphlang S & WC Range	3 Nos	0.42	2 Nos	0.40	2 Nos	0.45
3. Laitlyngkot S & WC Range	3 Nos	0.48	2 Nos	0.44	3 Nos	0.43
4. S & WC Beat Weilo	2 Nos	0.30	2 Nos	0.50	2 Nos	0.30
<b>Total – A</b>	<b>11 Nos</b>	<b>1.70</b>	<b>8 Nos</b>	<b>1.75</b>	<b>10 Nos</b>	<b>1.58</b>
<b><u>B. Nongstoin Division</u></b>						
1. Ranikor S & WC Range	2 Nos	0.31	1 No	0.31		
2. Mawkyrwat S & WC Range	2 Nos	0.36	1 No	0.33	1 No	0.65
3. Nongstoin S & WC Range	2 Nos	0.30	2 Nos	0.32	2 Nos	0.64
4. Sonapahar S & WC Range	2 Nos	0.31	2 Nos	0.39	1 No	0.13
5. Mairang S & WC Range	3 Nos	0.37	2 Nos	0.40	1 No	0.16
<b>Total – B</b>	<b>11 Nos</b>	<b>1.65</b>	<b>8 Nos</b>	<b>1.75</b>	<b>5 Nos</b>	<b>1.58</b>
<b><u>C. Ri – Bhoi S &amp; WC Division</u></b>						
1. Nongpoh S & WC Range	3 Nos	0.33	3 Nos	0.51	2 Nos	0.43
2. Patharkhmah S & WC Range	3 Nos	0.36	2 Nos	0.21	2 Nos	0.21
3. Umroi Beat Office	3 Nos	0.31	2 Nos	0.28	2 Nos	0.36
<b>Total – C</b>	<b>9 Nos</b>	<b>1.00</b>	<b>7 Nos</b>	<b>1.00</b>	<b>6 Nos</b>	<b>1.00</b>

<b>D. <u>Tura (T) Division</u></b>						
1. Machangpani S & WC Range	1 No	0.34	1 No	0.35	1 No	0.40
2. Damjonggre S & WC Range	1 No	0.35	1 No	0.35	1 No	0.40
3. Jongchipara S & WC Range	1 No	0.34	1 No	0.35	1 No	0.39
4. Thebronggre S & WC Range	1 No	0.34	1 No	0.35	1 No	0.39
5. Anogre S & WC Range	1 No	0.33	1 No	0.35		
<b>Total – D</b>	<b>5 Nos</b>	<b>1.70</b>	<b>5 Nos</b>	<b>1.75</b>	<b>4 Nos</b>	<b>1.58</b>
<b>E. <u>Simsanggre Division</u></b>						
1. Bonegre S & WC Range	1 No	0.48	1 No	0.43	1 No	0.69
2. Mendipathar S & WC Range	1 No	0.40	1 No	0.42		
3. Adokgre Beat	1 No	0.41	1 No	0.43	2 Nos	0.89
4. Wageasi S & WC Range	1 No	0.41	1 No	0.43		
<b>Total – E</b>	<b>4 Nos</b>	<b>1.15</b>	<b>4 Nos</b>	<b>1.71</b>	<b>3 Nos</b>	<b>1.58</b>
<b>F. <u>Baghmara (CC) Division</u></b>						
1. Baghmara S & WC Range	2 Nos	0.44	2 Nos	0.60	2 Nos	0.60
2. Chockpot S & WC Range	2 Nos	0.56	1 No	0.40	2 Nos	0.40
<b>Total – F</b>	<b>4 Nos</b>	<b>1.00</b>	<b>3 Nos</b>	<b>1.00</b>	<b>4 Nos</b>	<b>1.00</b>
<b>G. <u>Jowai (T) Division</u></b>						
1. Thadlaskein S & WC Range	6 Nos	8.65	3 Nos	0.68	6 Nos	0.66
2. Amlarem S & WC Range	2 Nos	0.45	2 Nos	0.44	2 Nos	0.38
3. Khlihriat S & WC Range	2 Nos	0.45	2 Nos	0.44	2 Nos	0.40
4. Lumshnong S & WC Range	2 Nos	0.45	2 Nos	0.44	2 Nos	0.44
<b>Total – G</b>	<b>12 Nos</b>	<b>10.00</b>	<b>9 Nos</b>	<b>2.00</b>	<b>12 Nos</b>	<b>1.88</b>
<b>GRAND TOTAL</b>	<b>56 Nos</b>	<b>18.70</b>	<b>45 Nos</b>	<b>10.96</b>	<b>44 Nos</b>	<b>10.20</b>

**Achievements under Different Cash / Horticultural crop Development Works taken up during 2004 – 05.**

Physical achievement in hectares(ha)

Pre-Preliminary work M-Maintenance

Name of Division	Horticulture		Cashewnut		Rubber		Coffee		Black Pepper		Nurseries		
	Phy	Fin	Phy	Fin	Phy	Fin	Phy	Fin	Phy	Fin	Phy	Fin	
1	2	3	4	5	6	7	8	9	10	11	12	13	
<b>East Khasi Hills</b> Shillong (CC) Pre M	3.06 ha 74.10 ha	0.10 3.11						1.0 ha	0.08	1.0 ha	0.06	12202 nos 295389 nos	0.59 3.06
<b>West Khasi Hills</b> Nongstoin Pre M	11.09 ha 50.83 ha	0.39 2.50			0.16 ha	0.88						235790 nos	3.54
<b>Ri Bhoi District</b> Ri – Bhoi Pre M	42.68 ha	2.17			105.20 ha	3.90	4.0 ha	0.60				25060 nos 473201 nos	1.21 3.14
<b>West Garo Hills</b> Tura (CC) Pre M	2.85 ha	0.17	10.70 ha	0.59	34.12 ha	1.88						17785 nos 136748 nos	0.97 2.34
<b>East Garo Hills</b> Simsangiri Pre M			11.82 ha	0.64	23.0 ha	1.26						147181 nos	2.21
<b>South Garo Hills</b> Baghmara Pre M			16.79 ha	0.66	6.0 ha	0.33						220262 nos	3.30
<b>Jaintia Hills</b> Jowai (CC) Pre M	82.67 ha	3.43			48.0 ha	2.11						2401 nos 410580 nos	0.12 6.16
<b>Total :-</b>		<b>11.87</b>		<b>1.89</b>		<b>10.36</b>		<b>0.68</b>		<b>0.06</b>			<b>26.64</b>

(Pre – Preliminary works; M- Maintenance)

## I. WATERSHED DEVELOPMENT PROJECT FOR SHIFTING CULTIVATION AREAS.

The Census report conducted by the Director of Census Operation during the year 1981 indicated that about 76,000 hectares area in the State has been cultivated annually for Shifting/Jhum cultivation purposes. The total families dependent on Shifting/Jhum Cultivation has been estimated at 51700 Nos.

The Ministry of Agriculture and Cooperation, Government of India, has launched a Central Sector Scheme known as the Watershed Development Project in Shifting Cultivation Areas (WDPSCA) during the 8<sup>th</sup> Plan period in 1994-95. In this period, 12 projects at the total cost of Rs. 600.00 lakhs had been taken up and completed during the year 1999-2000. 12,900 hectares area in Shifting/Jhum Cultivation areas was treated, benefiting 3200 Nos families.

During the 9<sup>th</sup> Plan, 38 (thirty eight) new watershed projects were approved by the Government of India at the total cost of Rs. 2062.00 lakhs. Upto the year 2004-2005 an expenditure of Rs. 1412.00 lakhs was incurred for treating of 18500 hectares Shifting/Jhum Cultivation areas. The Shifting/Jhum families benefited is 4900 Nos.

During the year 2001, the Task Force of the Government of Meghalaya conducted a study on the extent of Jhumming in the State and the findings are as follows:-

- ❖ The annual area under Jhumming is 40700 hectares.
- ❖ The families dependent on Jhum Cultivation is 46,600 Nos.

Hence, there is a drastic reduction on the areas affected by Jhumming and there is a decline in the families dependent on Jhumming.

### LIST OF ONGOING WATERSHED DEVELOPMENT PROJECTS IN SHIFTING CULTIVATION AREAS (WDPSCA) WITH SPECIAL CENTRAL ASSISTANCE FOR THE YEAR 2004-2005.

#### Name of Watersheds/Projects

##### **EAST KHASI HILLS**

- 1 Umlew Watershed
  - 2 Umpling-Umrynjah Watershed
  - 3 Wah Tamdong Watershed
  - 4 12-Shnong Watershed
- Total East Khasi Hills – 4 nos.**

##### **WEST KHASI HILLS**

- 1 Umkhynraw Watershed
  - 2 Um-mari Watershed
  - 3 Umsaw-Pungsier Watershed
- Total West Khasi Hills – 3 nos.**

##### **RI-BHOI**

- 1 Upper Umtung Watershed
  - 2 Middle Umtung Watershed
  - 3 Upper Umrit Watershed
  - 4 Upper Umling Watershed
  - 5 Upper Umbyrngaid Watershed
  - 6 Umtyngkong Watershed
  - 7 Umshyrkew Watershed
  - 8 Lambra Watershed
- Total Ri-Bhoi – 8 nos.**

##### **JAINTIA HILLS**

- 1 Umsning Watershed
- 2 Wah Danglun Watershed



- 3 Mynso-Palang-Pamblang Watershed
  - 4 Umladoh Watershed
- Total Jaintia Hills – 4 nos.**

**EAST GARO HILLS**

- 1 Upper Chibok Watershed
  - 2 Upper Chil Watershed
  - 3 Thapa Watershed
  - 4 Nengsit Watershed
  - 5 Romphi Watershed
  - 6 Giting Watershed
  - 7 Rongre Watershed
  - 8 Ganing Watershed
- Total East Garo Hills – 8 nos.**

**WEST GARO HILLS**

- 1 Sora Watershed
  - 2 Rome Watershed
  - 3 Drong Watershed
  - 4 Achi Watershed
  - 5 Ditti Watershed
  - 6 Rongridap Watershed
  - 7 Rongtap Watershed
- Total West Garo Hills – 7 nos.**

**SOUTH GARO HILLS**

- 1 Adap-Chiring Watershed
  - 2 Rongme Watershed
  - 3 Rompa-Bisik Watershed
  - 4 Rongmai Watershed
- Total South Garo Hills – 4 nos.**
- GRAND TOTAL : 38 nos.**

**DETAIL ITEM-WISE/WATERSHED-WISE ACHIEVEMENTS UNDER WATERSHED DEVELOPMENT PROJECT IN SHIFTING CULTIVATION AREAS  
FOR THE YEAR 2004-2005.**

Sl. No.	Name of Watershed	Basic Activities	ARABLE LAND TREATMENT								Productive System		NON- ARABLE LAND TREATMENT						DRAINAGE LINE TREATMENT				TOTAL		
			Agro-Horti		Contour Bunding		Peripheral Bunding		Improvement of Paddy Field.		1. Carpentry 2. Tailoring 3. Mud Block 4. Fingerlings 5. Piggery 6. Weaving	Dryland Horticulture		Broom stick / Agro forestry		Improvement of scrub Forests		Nurse-ries	Structures		Water Harvesting Structures				
			Phy.	Fin.	Phy.	Fin.	Phy.	Fin.	Phy.	Fin.		Phy.	Fin.	Phy.	Fin.	Phy.	Fin.		Phy.	Fin.	Phy.	Fin.		Phy.	Fin.
3	4	5	6	7	8	9	10	11	12	13	14	15	16	17	18	19	20	21	22	23	24	25			
	<b>EAST KHASI HILLS</b>																								
	Umlew Watershed	0.70	20 Ha(c) 18.4 ha. (2 <sup>nd</sup> yr)	0.300 0.62	20 Ha.	0.74	5000 R.M. (18 Ha.)	0.70			2) 5 units 3) 2 units 4) 100000	0.20 0.20 0.50	50Ha.© 30Ha.(M) (1 <sup>st</sup> yr)	1.50 0.66			22 Ha. (2 <sup>nd</sup> yr)	0.22	0.80		1. 1 No/ 10 ha 2. 3 Nos./15 ha. 3. 608 Rm/20 ha.	0.23 0.15 0.07	1 no. 25 ha.	0.25	7.84
	Umpling-Umrynjah Watershed	0.70	30 Ha(c) 27.4 ha. (2 <sup>nd</sup> yr)	0.45 0.93	20 Ha.	0.74	5000 R.M. (18 Ha.)	0.70			2) 5 units 3) 2 units 4) 100000	0.20 0.20 0.50	50 Ha.© 30 Ha. (1 <sup>st</sup> yr)	1.50 0.66			48 Ha. (2 <sup>nd</sup> yr)	0.48	0.80		1. 1 No/ 12 ha 2. -- 3. 192 Rm/14 ha.	0.23 -- 0.02	1 no. 24 ha.	0.25	8.36
	Wah Tamdong Watershed	0.70	50 Ha(c) 14.4 ha. (2 <sup>nd</sup> yr)	0.75 0.49	20 Ha.	0.74	5000 R.M. (18 Ha.)	0.70			2) 5 units 3) 2 units 4) 100000	0.20 0.20 0.50	50 Ha.© 30 Ha. (1 <sup>st</sup> yr)	1.50 0.66			70 Ha. (2 <sup>nd</sup> yr)	0.70	0.80		1. 1 No/ 11 ha 2. -- 3. 192 Rm/13 ha	0.23 -- 0.02	1 no. 26 ha.	0.25	8.44
	12-Shnong Watershed	0.60	10 Ha(c) 50 ha. (2 <sup>nd</sup> yr) Betel leaf 30 ha (1 <sup>st</sup> yr) 50 ha.(c)	0.15 1.70 0.60 1.15									Betel leaf 50 ha.	0.93	141 (C)	4.51	70 Ha. (2 <sup>nd</sup> yr)	0.70	0.83		1. 2 Nos.	0.45			11.62
	<b>Total East Khasi Hills</b>	<b>2.70</b>	<b>160 ha (c) 140.2 Ha (M)</b>	<b>2.80 4.34</b>	<b>60 Ha.</b>	<b>2.22</b>	<b>15000 R.M. (54 Ha.)</b>	<b>2.10</b>			<b>2)15 units 3) 6 units 4) 300000</b>	<b>0.60 0.60 1.50</b>	<b>140 1<sup>st</sup> yr 150 (c) yr.</b>	<b>2.91 4.50</b>	<b>141 ha ©</b>	<b>4.51</b>	<b>210 Ha. (2<sup>nd</sup> yr)</b>	<b>2.10</b>	<b>3.23</b>		<b>1. 5nos./33 ha. 2. 3 nos./15 ha. 3. 992 Rm/47 ha.</b>	<b>1.14 0.15 0.11</b>	<b>3 nos. 75 ha.</b>	<b>0.75</b>	<b>32.26</b>
	<b>WEST KHASI HILLS</b>																								
	Umkhynraw Watershed	0.36									2) 5 units	0.20	--	--			130 ha (2 <sup>nd</sup> yr)	1.30	0.19					2.05	
	Um-mari Watershed	0.70	4 ha (c) 23 ha (2 <sup>nd</sup> yr)	0.06 0.78			3000 RM (12 Ha)	0.42	20 Ha.	0.96	2) 5 units 3) 2 units	0.20 0.20	30 ha © 30 ha (2 <sup>nd</sup> yr)	0.90 0.69	14ha ©	0.27	50 ha (C) 67 ha (2 <sup>nd</sup> yr)	0.50 0.67	0.91		1. 2. 4 nos./20 ha. 3.	0.20			7.46
	Umsaw-Pungsier Watershed	0.70	30 ha (c) 49 ha (2 <sup>nd</sup> yr)	0.45 1.66			3000 RM (12 Ha)	0.42			2) 5 units 3) 2 units 4) 50000	0.20 0.20 0.25	30 ha © 30 ha (2 <sup>nd</sup> yr)	0.90 0.69	16ha ©	0.30	50 ha (C) 112 ha (2 <sup>nd</sup> yr)	0.50 1.12	0.80		1. 2. 4 nos/ 20 ha. 3.	0.20			8.39
	<b>Total West Khasi Hills</b>	<b>1.76</b>	<b>34 ha(c) 72 Ha. (2<sup>nd</sup> yr)</b>	<b>0.51 2.44</b>			<b>6000 RM (24 Ha)</b>	<b>0.84</b>	<b>20 Ha.</b>	<b>0.96</b>	<b>2)15 units 3)4 units 4)50000</b>	<b>0.60 0.40 0.25</b>	<b>60 ha © 60 ha (2<sup>nd</sup> yr)</b>	<b>1.80 1.38</b>	<b>30 ha</b>	<b>0.57</b>	<b>100 ha (C) 309 ha (2<sup>nd</sup> yr)</b>	<b>1.00 3.09</b>	<b>1.90</b>		<b>1. 2. 8 nos./40 ha.</b>	<b>0.40</b>			<b>17.90</b>
	<b>RI-BHOI</b>																								
	Upper Umtung Watershed	0.70	80 ha (c) 50 ha (2 <sup>nd</sup> yr)	1.20 1.70	30 ha.	1.11	10000 RM (36 ha)	1.40	20 ha.	0.97	2) 5 units 3) 2 units 4) 50000	0.20 0.20 0.25			150 ha ©	2.85	56 ha (2 <sup>nd</sup> yr)	0.56	1.22		1. 8 nos./50 ha. 2. 5 nos./10 ha. 3. 583Rm/20 ha.	1.82 0.25 0.07	4 nos. 40 ha.	1.00	15.50
	Middle Umtung Watershed	0.70	80 ha (c) 50 ha (2 <sup>nd</sup> yr)	1.20 1.70	30 ha.	1.11	10000 RM (36 ha)	1.40	20 ha.	0.97	2) 5 units 3) 2 units 4) 50000	0.20 0.20 0.25			150 ha ©	2.85	61 ha (2 <sup>nd</sup> yr)	0.61	1.22		1. 7 nos./55 ha. 2. 5 nos./15 ha. 3. 500Rm/ 15 ha.	1.59 0.25 0.06	3 nos. 35 ha.	0.75	15.06
	Upper Umrit Watershed	0.70	80 ha (c) 50 ha (2 <sup>nd</sup> yr)	1.20 1.70	30 ha.	1.11	10000 RM (36 ha)	1.40	20 ha.	0.97	2) 5 units 3) 2 units 4) 50000	0.20 0.20 0.25			150 ha ©	2.85	57 ha (2 <sup>nd</sup> yr)	0.57	1.22		1.4 nos/30 ha. 2. 8 nos./20 ha. 3. 1000Rm/32 ha.	0.91 0.40 0.12	4 nos. 38 ha.	1.00	14.80
	Upper Umling Watershed	0.70	80 ha (c) 50 ha	1.20 1.70	50 ha.	1.85	15000 RM (55 ha)	2.10	30 ha.	1.45	2) 5 units 3) 2 units	0.20 0.20			150 ha ©	2.85	27 ha (2 <sup>nd</sup> yr)	0.27	1.22		1. 5 ha./40 ha. 2. 8 nos./20 ha.	1.14 0.40	5 nos. 40 ha.	1.25	16.88

	Upper Umbyngaid Watershed	0.70	2 <sup>nd</sup> yr 80 ha (c) 50 ha 2 <sup>nd</sup> yr	1.20 1.70	30 ha.	1.11	10000 RM (36 ha)	1.40	20 ha.	0.97	4) 50000 2) 5 units 3) 1 units 4) 50000	0.25 0.20 0.10 0.25			150 ha ©	2.85	17 ha (2 <sup>nd</sup> yr)	0.17	1.22	3. 833Rm/20 ha. 0.10	1. 4 nos./30 ha. 2. 8 nos./30 ha. 3. 750Rm/24 ha.	0.91 0.40 0.09	3 nos. 36 ha.	0.75	14.02	
	Umtyngkong Watershed	0.70	80 ha (c) 50 ha 2 <sup>nd</sup> yr	1.20 1.70	30 ha.	1.11	10000 RM (36 ha)	1.40	20 ha.	0.97	2) 5 units 3) 1 units 4) 50000	0.20 0.10 0.25			150 ha ©	2.85	17 ha (2 <sup>nd</sup> yr)	0.17	1.22	1. 5 nos./35 ha. 2. 8 nos./30 ha. 3. 1083Rm/27 ha.	1.14 0.40 0.13	3 nos. 28 ha.	0.75	14.29		
	Umshyrkew Watershed	1.30	130ha(c) 50 ha 2 <sup>nd</sup> yr	1.95 1.70	56 ha.	2.10	20000 RM (72 ha)	2.80	52.82 ha.	2.55	2) 5 units 3) 1 units 4) 50000	0.20 0.10 0.25			170 ha ©	3.23	42 ha (2 <sup>nd</sup> yr)	0.42	1.22	1. 6 nos./68 ha. 2. 10nos./40 ha. 3. 500Rm/17 ha.	1.36 0.50 0.06	5 nos. 45 ha.	1.25	20.99		
	Lambra Watershed	0.70	80 ha (c) 50 ha 2 <sup>nd</sup> yr	1.20 1.70	30 ha.	1.11	10000 RM (36 ha)	1.40	20 ha.	0.97	2) 5 units 3) 1 units 4) 50000	0.20 0.10 0.25			150 ha (C)	2.85	35 ha (2 <sup>nd</sup> yr)	0.35	1.60	1. 4nos./32 ha. 2. 8nos./30 ha. 3. 833Rm/18 ha.	0.91 0.40 0.10	4 nos. 40 ha.	1.00	14.84		
	<b>Total Ri-Bhoi</b>	<b>6.20</b>	<b>690ha(c) 400 ha 2<sup>nd</sup> yr</b>	<b>10.35 13.60</b>	<b>286 ha.</b>	<b>10.61</b>	<b>95000 RM (343ha)</b>	<b>13.30</b>	<b>202.82 ha.</b>	<b>9.82</b>	<b>2)40units 3)12units 4)400000</b>	<b>1.60 1.20 2.00</b>			<b>1220 ha (C)</b>	<b>23.18</b>	<b>312 ha (2<sup>nd</sup> yr)</b>	<b>3.12</b>	<b>10.14</b>	<b>1. 43nos./340 ha. 2. 60nos./195 ha. 3. 6082Rm/173 ha</b>	<b>9.78 3.00 0.73</b>	<b>31 nos. 302 ha.</b>	<b>7.75</b>	<b>126.38</b>		
	<b>Total Khasi Hills &amp; Ri-Bhoi</b>	<b>10.66</b>	<b>884ha(C) 622.2(M)</b>	<b>13.66 20.38</b>	<b>346 ha.</b>	<b>12.83</b>	<b>116000 Rm 421 ha.</b>	<b>16.24</b>	<b>222.82 ha.</b>	<b>10.78</b>	<b>2)70units 3)22units 4)750000</b>	<b>2.80 2.20 3.75</b>	<b>210 ha(C) 140 (1<sup>st</sup> yr) 60 ha.(2<sup>nd</sup> yr)</b>	<b>6.30 2.91 1.38</b>	<b>1391 ha ©</b>	<b>28.26</b>	<b>100 ha (C) 831 ha (2<sup>nd</sup> yr)</b>	<b>1.00 8.31</b>	<b>15.27</b>	<b>1. 48nos/373 ha 2. 71nos./250ha 3. 7074Rm/220 ha.</b>	<b>10.92 3.55 0.84</b>	<b>34 nos. 377 ha</b>	<b>8.50</b>	<b>180.54</b>		
	<b>JAINTIA HILLS</b>																									
	Wah danglun Watershed	0.50	4.7 ha (2 <sup>nd</sup> yr)	0.15			5000 Rm 18 ha.	0.70			2) 5 units 5) 15units	0.20 0.45			3.95 ha. (2 <sup>nd</sup> yr)	0.09	50 ha (2 <sup>nd</sup> yr)	0.50	0.20						3.89	
	Umsning Watershed	0.47	0.7 ha (2 <sup>nd</sup> yr)	0.02											3.95 ha (2 <sup>nd</sup> yr)	0.09	120 ha (2 <sup>nd</sup> yr)	1.20	0.22						2.00	
	Mynso-Palang-Pamblang Watershed	0.45	0.07 ha (2 <sup>nd</sup> yr)	0.02			11142 Rm 41.3 ha	1.56			2) 5 units 3) 5units 5) 20 unit	0.20 0.50 0.60			1.95 ha. (2 <sup>nd</sup> yr)	0.04	85 ha (C) 17 ha (2 <sup>nd</sup> yr)	0.85 0.17	0.20	1. 2 nos./30 ha. 2. 8 nos./25 ha. 3. 583Rm/15 ha.	0.45 0.40 0.07	2 Nos. 15 ha.	0.50	6.01		
	Umladoh Watershed	0.35	11.7 ha (2 <sup>nd</sup> yr)	0.40											5 ha. (2 <sup>nd</sup> yr)	0.12	130 ha (2 <sup>nd</sup> yr)	1.30	<b>0.20</b>						2.37	
	<b>Total Jaintia Hills</b>	<b>1.77</b>	<b>17.8 ha.</b>	<b>0.59</b>			<b>16142 Rm 59.3 ha.</b>	<b>2.26</b>			<b>2)10units 3)5 units 5)35units</b>	<b>0.40 0.50 1.05</b>			<b>14.8 ha. (2<sup>nd</sup> yr)</b>	<b>0.34</b>	<b>85 ha. (2<sup>nd</sup> yr) 317 ha. (2<sup>nd</sup> yr)</b>	<b>0.85 3.17</b>	<b>0.82</b>	<b>1. 2 nos./30 ha. 2. 8nos./25 ha. 3. 583Rm/15 ha.</b>	<b>0.45 0.40 0.07</b>	<b>2 nos. 15 ha.</b>	<b>0.50</b>	<b>13.17</b>		
	<b>EAST GARO HILLS</b>																									
	Upper Chibok Watershed	0.50	6.7ha (2 <sup>nd</sup> yr)	0.20			1000 Rm 4 ha.	0.14			2) 5 units 6) 2 units	0.20 0.24			8.2 ha. (2 <sup>nd</sup> yr)	0.19	20 ha (C) 138 ha (2 <sup>nd</sup> yr)	0.20 1.38	0.20	1. 1no./15 ha. 2. 1 no./4 ha. 3. 83Rm/2 ha.	0.23 0.05 0.01	<b>1 no. 9 ha.</b>	0.25	3.79		
	Upper Chil Watershed	0.50	6.7 ha (2 <sup>nd</sup> yr)	0.20			1000 Rm 4 ha.	0.14			2) 5 units 6) 2 units	0.20 0.24			8.2 ha. (2 <sup>nd</sup> yr)	0.19	20 ha (C) 57 ha (2 <sup>nd</sup> yr)	0.20 0.57	0.20	1. 2 nos./20 ha. 2. 1 no./2 ha. 3. 166Rm/3 ha.	0.46 0.05 0.02	1 no. 5 ha.	0.25	3.22		
	Thapa Watershed	0.50	6.7 ha (2 <sup>nd</sup> yr)	0.20			1000 Rm 4 ha.	0.14			2) 5 units 6) 2 units	0.20 0.24			8.2 ha. (2 <sup>nd</sup> yr)	0.19	20 ha (C) 85 ha (2 <sup>nd</sup> yr)	0.20 0.85	0.20	1. 1 no./14 ha. 2. 1 no./5 ha. 3. 83Rm/3 ha.	0.23 0.05 0.01	1 no. 8 ha.	0.25	3.26		
	Nengsit Watershed	0.50	6.7 ha (2 <sup>nd</sup> yr)	0.20			1000 Rm 4 ha.	0.14			2) 5 units 6) 2 units	0.20 0.24			8.2 ha. (2 <sup>nd</sup> yr)	0.19	20 ha (C) 125 ha (2 <sup>nd</sup> yr)	0.20 1.25	0.20	1. 1no./15 ha. 2. 1 no./4 ha. 3. 83Rm/2 ha.	0.23 0.05 0.01	1 no. 9 ha.	0.25	3.66		
	Romphi Watershed	0.50	6.7 ha (2 <sup>nd</sup> yr)	0.20			1000 Rm 4 ha.	0.14			2) 5 units 6) 2 units	0.20 0.24			8.2 ha. (2 <sup>nd</sup> yr)	0.19	20 ha (C)	0.20	0.20	1.2 nos./17 ha. 2.1 no./3 ha.	0.46 0.05	1 no. 7 ha.	0.25	3.23		

																58 ha (2 <sup>nd</sup> yr)	0.58		3. 166Rm/3 ha.	0.02				
	Giting Watershed	0.50	6.7 ha (2 <sup>nd</sup> yr)	0.20			1000 Rm 4 ha.	0.14		2) 5 units 6) 2 units	0.20 0.24			8.2 ha. (2 <sup>nd</sup> yr)	0.19	20 ha (C) 58 ha (2 <sup>nd</sup> yr)	0.20 0.58	0.20	1.2 nos./16 ha. 2.1 no./ 2 ha. 3. 166Rm/3 ha.	0.46 0.05 0.02	1 no. 9 ha.	0.25	3.23	
	Rongre Watershed	0.50	6.7 ha (2 <sup>nd</sup> yr)	0.20			1000 Rm 4 ha.	0.14		2) 5 units 6) 2 units	0.20 0.24			8.2 ha. (2 <sup>nd</sup> yr)	0.19	20 ha (C) 85 ha (2 <sup>nd</sup> yr)	0.20 0.85	0.20	1. 1 no./13 ha, 2. 1 no./4 ha. 3. 83Rm/3 ha.	0.23 0.05 0.01	1 no. 10 ha.	0.25	3.26	
	Ganing Watershed	0.50	6.7 ha (2 <sup>nd</sup> yr)	0.20			1000 Rm 4 ha.	0.14		2) 5 units 6) 2 units	0.20 0.24			8.2 ha. (2 <sup>nd</sup> yr)	0.19	20 ha (C) 58 ha (2 <sup>nd</sup> yr)	0.20 0.58	<b>0.20</b>	<b>1. 2 nos./18 ha.</b> <b>2. 1 no./2 ha.</b> <b>3. 166Rm/2 ha.</b>	0.46 0.05 0.02	1 no. 8 ha.	0.25	3.23	
	<b>Total East Garo Hills</b>	<b>4.00</b>	<b>53.60 ha.</b> (2 <sup>nd</sup> yr)	<b>1.60</b>			<b>8000 Rm</b> <b>32 ha.</b>	<b>1.12</b>		<b>2)40units</b> <b>6)16units</b>	<b>1.60</b> <b>1.92</b>			<b>65.6 ha.</b> (2 <sup>nd</sup> yr)	<b>1.52</b>	<b>160 ha</b> (C) <b>664 ha</b> (2 <sup>nd</sup> yr)	<b>1.60</b> <b>6.64</b>	<b>1.60</b>	<b>1. 12 nos./128ha.</b> <b>2. 8 nos./26 ha.</b> <b>3. 996Rm/21 ha.</b>	<b>2.76</b> <b>0.40</b> <b>0.12</b>	<b>8 nos.</b> <b>65 ha.</b>	<b>2.00</b>	<b>26.88</b>	
	<b>WEST GARO HILLS</b>																							
	Sora Watershed	0.50	28.6 ha (2 <sup>nd</sup> yr) 30 ha (c)	0.86 0.45	10 ha.	0.37	4000 Rm. 16 ha.	0.56	10 ha.	0.49	2) 5 units 6) 2 units	0.20 0.24	60 ha © 30 ha (2 <sup>nd</sup> yr)	1.80 0.69	10 (c)	0.19	25 ha. 2 <sup>nd</sup> yr	0.25	0.80	2) 8nos./15ha 4) 4 nos/20ha	0.40 0.96	Water Harvesting 2 nos. 20 ha. 0.50		9.26
	Rome Watershed	0.50	40 ha. (2 <sup>nd</sup> yr) 70 ha. (c)	1.20 1.98	10 ha.	0.37	4000 Rm. 16 ha.	0.56	10 ha.	0.49	2) 5 units 6) 2 units	0.20 0.24		17 ha © 30 ha. 2 <sup>nd</sup> yr	0.32 0.69	30 ha (2 <sup>nd</sup> yr)	0.30	0.80	1) 3 nos./15ha 2) 6nos./8 ha. 3) 500Rm/5ha 4) 2nos./10 ha.	0.69 0.30 0.06 0.48	1 no. 7 ha.	0.25	9.43	
	Drong Watershed	0.50	8 ha. (c) 40 ha. (2 <sup>nd</sup> yr)	0.15 1.20	10 ha.	0.37	4000 Rm. 16 ha.	0.56	10 ha.	0.49	2) 5 units 6) 2 units	0.20 0.24	25 ha © 30 ha (2 <sup>nd</sup> yr)	0.75 0.69	50 ha (c)	0.95	30 ha 2 <sup>nd</sup> yr	0.30	0.80	1) 2nos/10 ha. 2)7nos./20ha. 3) 583Rm/15ha 4) 2nos./10 ha	0.46 0.35 0.07 0.48	2 nos. 25 ha.	0.50	9.06
	Achi Watershed	0.50	8 ha. (c) 40 ha (2 <sup>nd</sup> yr)	0.15 1.20	10 ha.	0.37	4000 Rm. 16 ha.	0.56	10 ha.	0.49	2) 5 units 6) 2 units	0.20 0.24	20 ha (2 <sup>nd</sup> yr)	0.46	28 ha ©	0.53		0.80	1) 3nos./15ha 2) 8 nso./30ha. 3) 667Rm/15ha. 4) 3 nos./15 ha.	0.68 0.40 0.08 0.72	5 nos. 50 ha	1.25	8.63	
	Ditti Watershed	0.50	40ha. (c) 20 ha. (2 <sup>nd</sup> yr)	0.72 0.60	10 ha.	0.37	4000 Rm. 16 ha.	0.56	10 ha.	0.49	2) 5 units 6) 2 units	0.20 0.24		10 ha (c) 11.8 ha. 2 <sup>nd</sup> yr.	0.19 0.27	35 ha 2 <sup>nd</sup> yr	0.35	0.80	1) 4nos./20 ha. 2) 6 nos./10ha. 3) 200Rm/35ha. 4) 1no./5 ha.	0.91 0.30 0.24 0.24	2 nos. 20 ha.	0.50	7.48	
	Rongridap Watershed	0.50	58ha. (c) 24 ha. (2 <sup>nd</sup> yr)	1.05 0.72	10 ha.	0.37	4000 Rm. 16 ha.	0.56	10 ha.	0.49	2) 5 units 6) 2 units	0.20 0.24	15 ha (2 <sup>nd</sup> yr)	0.34	10 ha ©	0.19	130 ha 2 <sup>nd</sup> yr	0.30	0.80	1) 1no./5 ha .2) 10nos./40 ha. 3) 750Rm./26ha 4) 4 nos./ 20 ha.	0.23 0.50 0.09 0.96	2 nos. 18 ha.	0.50	8.04
	Rongtap Watershed	0.50	42ha. (c) 40 ha (2 <sup>nd</sup> yr) 11 ha.(c)	0.76 1.20 0.17	10 ha.	0.37	4000 Rm. 16 ha.	0.56	10 ha.	0.49	2) 5 units 6) 2 units	0.20 0.24	32 ha © 30 ha (2 <sup>nd</sup> yr)	0.96 0.69	13 ha (c)	0.25	10 ha 2 <sup>nd</sup> yr	0.10	0.80	1) 3 nos./15 ha. 2) 8 nos./15 ha. 3) 1000Rm/13 ha	0.68 0.40 0.12	5 nos. 30 ha.	1.25	9.74
	<b>Total West Garo Hills</b>	<b>3.50</b>	<b>267 ha(C)</b> <b>243.6 ha.</b> (M)	<b>5.43</b> <b>6.98</b>	<b>70 ha.</b>	<b>2.59</b>	<b>28000 Rm.</b> <b>112 ha.</b>	<b>3.92</b>	<b>70 ha.</b>	<b>3.43</b>	<b>2)35units</b> <b>6)14units</b>	<b>1.40</b> <b>1.68</b>	<b>117 ha ©</b> <b>125 ha</b> (2 <sup>nd</sup> yr)	<b>3.51</b> <b>2.87</b>	<b>138 ha (c)</b> <b>41.8 ha 2<sup>nd</sup></b> <b>yr.</b>	<b>2.62</b> <b>0.96</b>	<b>160 ha</b> (2 <sup>nd</sup> yr)	<b>1.60</b>	<b>5.60</b>	<b>1. 16nos./80 ha</b> <b>2. 53 Nos./138</b> <b>3. 5500/119</b> <b>4. 16 /80</b>	<b>3.65</b> <b>2.65</b> <b>0.66</b> <b>3.84</b>	<b>19 nos.</b> <b>170 ha.</b>	<b>4.75</b>	<b>61.64</b>
	<b>SOUTH GARO HILLS</b>																							
	Adap-Chiring Watershed	0.46	1.9 ha. (2 <sup>nd</sup> yr)	0.06			8000 Rm. 32 ha.	1.12		2) 5 units 6) 4 units	0.20 0.48					75 ha 2 <sup>nd</sup> yr	0.75	0.20	1) <b>2nos./40h</b> 2) <b>8nos./25ha.</b> 3) <b>667Rm/17ha.</b>	<b>0.45</b> <b>0.40</b> <b>0.08</b>	1 no. 12 ha.	0.25	4.45	

Rongme Watershed	0.40	1.9 ha. (2 <sup>nd</sup> yr)	0.06			8000 Rm. 32 ha.	1.12			2) 5 units 6) 3 units	0.20 0.36				45 ha 2 <sup>nd</sup> yr.	0.45	0.20	1) 2 nos./50ha. 2) 3 nos./10ha. 3) 667Rm/14 ha. 4) 1 no./10 ha.	0.46 0.15 0.08 0.24	1 no. 10 ha.	0.25	3.97	
Rompa-Bisik Watershed	0.47	1.9 ha. (2 <sup>nd</sup> yr)	0.06			8000 Rm. 32 ha.	1.12			2) 5 units 6) 4 units	0.20 0.48				75 ha (2 <sup>nd</sup> yr)	0.75	0.20	1) 2 nos./50ha. 2) 3 nos./9 ha. 3) 667Rm/11 ha. 4) 1 no./12 ha.	0.46 0.15 0.08 0.24	1 no. 12 ha.	0.25	4.46	
Rongmai Watershed	0.41	1.9 ha. (2 <sup>nd</sup> yr)	0.06			8500 Rm. 32 ha.	1.19			2) 5 units 6) 4 units	0.20 0.48				45 ha (2 <sup>nd</sup> yr)	0.45	0.20	1) 2 nos./40 ha. 2) 8 nos./10 ha. 3) 583 Rm/15 ha. 4) 3 nos./20 ha.	0.46 0.40 0.07 0.72	1 no. 9 ha.	0.25	4.89	
<b>Total South Garo Hills</b>	<b>1.74</b>	<b>7.6 ha</b>	<b>0.24</b>			<b>32500 Rm 128 ha.</b>	<b>4.55</b>			<b>2)20units 6)15units</b>	<b>0.80 1.80</b>				<b>240 ha (2<sup>nd</sup> yr)</b>	<b>2.40</b>	<b>0.80</b>	<b>1) 8 nos./18 0ha. 2) 22nos./54 ha. 3) 2584Rm/57ha 4) 5 nos./42 ha.</b>	<b>1.83 1.10 0.31 1.20</b>	<b>4 nos. 43 ha.</b>	<b>1.00</b>	<b>17.77</b>	
<b>Total Garo Hills</b>	<b>9.24</b>	<b>304.8 ha.(m) 267 ha ©</b>	<b>8.82 5.43</b>	<b>70 ha.</b>	<b>2.59</b>	<b>68500 Rm 272 ha.</b>	<b>9.59</b>	<b>70 ha.</b>	<b>3.43</b>	<b>2)95units 6)45units</b>	<b>3.80 5.40</b>	<b>117ha(C) 125 ha 2<sup>nd</sup> yr</b>	<b>3.51 2.87</b>	<b>138 ha (C) 107.4ha (M)</b>	<b>2.62 2.48</b>	<b>160 ha (C) 1064 ha (2<sup>nd</sup> yr)</b>	<b>1.60 10.64</b>	<b>8.00</b>	Retaining Wall		<b>31 nos. 278 ha.</b>	<b>7.75</b>	<b>106.29</b>
<b>GRAND TOTAL :</b>	<b>21.67</b>	<b>1151 ha © 934.8 ha (m)</b>	<b>19.09 29.79</b>	<b>416 ha.</b>	<b>15.42</b>	<b>200642 Rm 752.3 ha.</b>	<b>28.09</b>	<b>292.82 ha.</b>	<b>14.21</b>	<b>2)175unit 3)27unit 4)750000 5)35 unit 6)45unit</b>	<b>7.00 2.70 3.75 1.05 5.40</b>	<b>327 ha (c) 140 8ha 1<sup>st</sup> yr. 185ha 2<sup>nd</sup> yr.</b>	<b>9.81 2.91 4.25</b>	<b>1529 ha © 122.2 ha (M)</b>	<b>30.82 2.82</b>	<b>345 ha (C) 2212 ha (2<sup>nd</sup> yr)</b>	<b>3.45 22.12</b>	<b>24.09</b>	Retaining Wall		<b>67 nos. 670 ha.</b>	<b>16.75</b>	<b>300.00</b>

(C – Creation works; M – Maintenance works)

**RIDF IX NABARD LOAN**

During 2004-2005, 11 new projects under RIDF IX were sanctioned at the total project cost of Rs. 590.08 lakhs. 2 nos of Projects under East Khasi Hills, 2 nos under West Khasi Hills, 2 nos under Ri-Bhoi, 1 no under East Garo Hills, 2 nos under West Garo Hills and 2 nos under Jaintia Hills are being implemented and they are continuing during 2005-2006 also. The financial achievement during 2004-2005 was Rs. 200.00 lakhs. During 2005-2006, an amount of Rs. 214.75 lakhs was ear-marked to be implemented.

**Statement Showing the Achievements on RIDF-IX NABARD Loan during 2004-05**

Sl no	Name of projects	01. Head Work Division Irrigation channel etc		02. Farm pond/Water Harvesting Structure		03. Erosion Control works/Gabion/Retaining Protection wall		04. Bench Terracing		05. Contour Bunding		06. Improvement of existing paddy field		07. Training	08. Improvemen t/Maintain of link road	Total
		Phy 3	Fin 4	Phy 5	Fin 6	Phy 7	Fin 8	Phy 9	Fin 10	Phy 11	Fin 12	Phy 13	Fin 14			
1	East Khasi Hills Wah Khim Murah	8 nos	1.07	nos	0.37	31 nos	8.01							0.20	0.30	9.95
2	Umlongkhoi	6 nos	3.08	2 nos	0.50	10 nos	3.02	7.5 ha	2.67	4.8 ha	0.23			0.21	0.19	10.20
	<b>Total East Khasi Hills</b>		<b>4.15</b>		<b>0.87</b>		<b>11.33</b>		<b>2.67</b>		<b>0.23</b>			<b>0.41</b>	<b>0.49</b>	<b>20.15</b>
3	West Khasi Hills Umyiap RVP Phase II	15 nos 420 Rm	8.62	1 no	0.98	18 nos 25 Rm	17.57	21.95 ha	13.88					0.98	2.32	44.35
4	Kynhiew RVP	9 nos	4.16	3 nos	4.49	5 nos	7.66	5.43 ha	3.98					0.54	2.02	22.85
	<b>Total West Khasi Hills</b>		<b>12.78</b>		<b>5.47</b>		<b>25.23</b>		<b>17.86</b>					<b>1.52</b>	<b>4.34</b>	<b>67.20</b>
5	Ri-Bhoi Umralleng	27 nos	3.57	11 nos	5.64	21 nos	1.06	7 ha	7.86		3.43	8 ha	0.32	0.34	0.88	23.10
6	Umtasor	11 nos	6.37	3 nos	0.43	6 nos	4.29	4.94 ha	2.64	4 ha	0.70			0.22	0.30	14.95
	<b>Total Ri-Bhoi</b>		<b>9.94</b>		<b>6.07</b>		<b>5.35</b>		<b>10.50</b>		<b>4.13</b>		<b>0.32</b>	<b>0.56</b>	<b>1.18</b>	<b>38.05</b>
7	East Garo Hills Rongrang		0.60					27.67 ha	7.00							7.60
	<b>Total East Garo Hills</b>		<b>0.60</b>						<b>7.00</b>							<b>7.60</b>
8	West Garo Hills Diazol RVP	5 nos	2.71	2 nos	0.51			27.65 ha	7.03					0.10	0.65	11.00
9	Middle Ringngi	7 nos	4.11	6 nos	2.11	2 nos	1.04	27 ha	6.81					0.10	1.23	15.40
	<b>Total West Garo Hills</b>		<b>6.82</b>		<b>2.62</b>		<b>1.04</b>		<b>13.84</b>					<b>0.20</b>	<b>1.88</b>	<b>26.40</b>
10	Jaintia Hills Sung RVP	16 nos	8.51			15 nos	13.20	3.99 ha	0.79	1 ha	0.05			0.40	1.00	23.95
11	Litang RVP	Dam 6 nos Channel 2 nos	7.76			7 nos	6.19	3 ha	0.73		0.29	21.25 ha	0.85	0.30	0.53	16.65
	<b>Total Jaintia Hills</b>		<b>16.27</b>				<b>19.39</b>		<b>1.52</b>		<b>0.34</b>		<b>0.85</b>	<b>0.70</b>	<b>1.53</b>	<b>40.60</b>
	<b>TOTAL</b>	<b>Dam= 110 nos Channel = 2 nos and 420 Rm</b>	<b>50.56</b>	<b>30 nos</b>	<b>15.03</b>	<b>115 nos and 25 Rm</b>	<b>62.34</b>	<b>136.13 ha</b>	<b>53.39</b>	<b>9.8 ha</b>	<b>4.70</b>	<b>29.25 ha</b>	<b>1.17</b>	<b>3.39</b>	<b>9.42</b>	<b>200.00</b>

## **II. INTERGRATED WASTELAND DEVELOPMENT PROJECTS (IWDP)**

Due to the undulating terrain conditions, high rainfall and faulty cultivation, Meghalaya is gradually losing the vital natural Land Resources, i.e., Soil and Water which leads to Land and Water degradation problems. It has been reported that the total Wastelands is about 44.16 percent (9904 Sq.Kms) of the total geographical area of the State (22249 Sq.Kms).

During the year 1999-2000, the Ministry of Rural Development, Department of Land Resources, Government of India sanctioned the Integrated Wasteland Development Projects (IWDP) with the following objectives:-

1. Developing Wasteland/degraded lands on a watershed basis, keeping in view the capability of the Land, site conditions and local needs.
2. Promoting the over all economic development and improving the Socio-Economic conditions of the rural people.
3. Restoring the ecological balance by harnessing, conserving and developing the natural resources, that is, land, water and vegetation cover.

From 1999-2000 to 2004-05, 21 nos of projects in all the seven Districts covering 152 Nos of micro watersheds have been taken up under the IWDP programme. The total project cost for treating 76,725 hectares has been estimated at Rs. 4383.28 lakhs. The expenditure incurred upto 2004-05 is Rs. 597.50 lakhs. The total area treated upto 2003-2004 is 12,000 hectares.

**IWDP SANCTIONED BY THE GOVERNMENT OF INDIA FOR THE PROJECTS**  
**DURING 1999-2000, 2000-2001, 2003-2004, 2004-2005.**

Sl No	Year	No of Projects	No. of Water shed	Total area to be treated	Total Project Cost	Date of Sanction	Amount sanctioned by the Govt of India		Amount released for Central Share by the Government of India			Total	Expenditure incurred	Remarks
							Central Share	State Share	1 <sup>st</sup> Inslt	2 <sup>nd</sup> Inslt	3 <sup>rd</sup> Inslt			
1	2	3	4		5	6	7	8	9	10	11	12	13	
1	1999-2000	2 nos	16 nos	11011ha	440.44	March 2000	440.44	-	65.09	82.50	47.92	195.51	195.01	
2	2000-2001	5 nos	55 nos	23714ha	1422.84	Sept 2001	1304.28	118.56	195.65	184.79	-	380.44	336.49	
3	2003-2004	7 nos	55 nos	28000 ha	1680.00	Feb 2004	1540.00	140.00	231.00	-	-	231.00	66.00	
4	2004-2005	7 nos	26nos	14000 ha	840.00 ha	March 2005	770.00	70.00	115.50	-	-	115.50	-	
<b>Grand Total</b>		<b>21 nos</b>	<b>152 nos</b>	<b>76725 ha</b>	<b>4383.28</b>		<b>4054.72</b>	<b>328.56</b>	<b>607.24</b>	<b>267.29</b>	<b>47.92</b>	<b>922.45</b>	<b>597.50</b>	

**Ongoing Projects** initiated in the year 1999-2000 in all the seven districts of the State:-

East Khasi Hills - 13 nos.

West Khasi Hills - 8 nos.

Ri-Bhoi - 12 nos.

Jaintia Hills - 8 nos.

East Garo Hills - 11 nos.

West Garo Hills - 8 nos.

South Garo Hills - 10 nos.

---

TOTAL - 70 nos.



## **PROMOTION OF JATROPHA CULTIVATION IN MEGHALAYA.**

1. **INTRODUCTION**: The depletion of available vital fossil fuel resources and over commitment to use fossil fuel is likely to lead to energy crisis situation in the near future. Hence, there is a need to look for alternative sources of energy, which are renewable, safe and non-polluting. It has been found that among the many tree species bearing seeds rich in oil and having properties of excellent fuel which can be processed into diesel-substitute, **Jatropha curcas** (Ratanjyot) would be very suitable in our condition. The chemical composition of Jatropha oil and experiment conducted on performance of diesel engines run on Jatropha, indicate that Jatropha oil could be used as a commercially viable alternative to diesel, kerosene, etc.

The Soil and Water Conservation Department proposes to undertake plot plantation of Jatropha in forest and non-forest areas with the following objectives:-

- i) To provide cheap and locally available energy.
- ii) To provide substitute/supplemental energy for agriculture at the door step of farmer.
- iii) To provide green coverage to wastelands and other lands.
- iv) To save foreign exchange by organised production of bio-diesel for Jatropha oil.
- v) To conserve eco-friendly system.
- vi) To provide rural employment opportunities for male and marginal farmers and other weaker section of the society, particularly, those living below poverty line and women folk etc., round the year.
- vii) To raise economic status of small/marginal farmers as well as tribals by providing remunerative prices for their produce/collection.

### **PROPOSAL :**

The State of Meghalaya possesses suitable agro-climatic and physiographic features favourable for the growth of Jatropha and such areas are found in the Southern slopes of the State stretching along the international boundary with Bangladesh and also on the Northern slopes along the boundary with Assam. Most of these lands are either abandoned jhummed lands or fallow wasteland, which are yet to be put into any productive plantations. In some pockets of land local species of Jatropha is already grown by the local people as an hedge plant along the boundary of the plot of land. The extent of wasteland in the State of Meghalaya as per the report prepared by the Ministry of Rural Development Department of Land Resources in collaboration with the National Remote sensing Agency is 9691.81 Sq.Kms. or 9,69,181 hectares. District-wise wasteland of Meghalaya is shown in Annexure-I.

Jatropha being a potential crop for generating employment and income to the local people as well as to improve the environment of such areas where it is grown, the Department of Soil & Water Conservation proposes to take up Jatropha Cultivation in a large scale with the target areas of 7000 hectares; spanning for a period of five year and the financial involvement of Rs.2423.39 Lakhs (Rupees Twenty Four Crores Twenty Three Lakhs Thirty Nine Thousand) only.

The proposed amount is over and above for the Development of plantation and maintenance and also includes the following items.

1. **Construction of 2(two) Nos. of seed procurement centre** : One in Byrnihat and Tura respectively at the rate of Rs.80.00 lakhs (Rupees Eighty Lakhs) only each. Each of these centres will have the following (i) Seed godown; (ii) Weighing bridge; (iii) Oil extraction unit; (iv) Cleaner and grader; (v) Drier; (vi) Storage tanks, etc.
2. **Construction of Transterification Units** : One each in Byrnihat and Tura at the rate of Rs.20.00 lakhs (Rupees Twenty Lakhs)only. This unit will further process the extracted oil so as to separate glycerol from it.
3. **Training Costs** : As this being a new crop, 2(Two) Nos. of Trainer's Training is proposed total amounting to Rs.81,000/- (Rupees Eighty One Thousand)only Three Farmers' Training in each of the Seven Districts the first one during the initial stage of the project; the second one during the mid-project and the third one just before the last phase of the project; are proposed to take up. The

financial involvement for the 21 Nos. of Farmers' Training come to Rs.4.20 lakhs (Rupees Four Lakhs Twenty Thousand)only.

4. Publication and Publicity : An amount of Rs.1.00 lakhs (Rupees One Lakh) only is proposed for publication of booklets and pamphlets and other publicity materials.
5. Monitoring, Evaluation and Technical Support : An amount of Rs.2.00 lakhs (Rupees Two Lakhs)only is proposed for this objective.
6. Establishment & Expenditure : 5% of the total cost has been earmarked for the establishment expenditure and the total amount cover to Rs.115.38 Lakhs (Rupees One Crore Fifteen Lakhs Thirty Eight Thousand) only.

So, the total proposed financial implication for a period of five years is Rs.2423.39 Lakhs as per details at Annexure – II.



**DISTRICT-WISE WASTELANDS OF MEGHALAYA**

(Area in Sq. Kms.)

District	Land with/without scrub	Water logged/ marshy lands	Shifting Cultivation Area	Degraded notified forest lands	Total Wastelands	Total Geographical Area	Percentage (%) to total Geographical Area.
1	2	3	4	5	6	7	8
East Khasi Hills & Ri-Bhoi	1423.99	--	153.00	1553.15	3130.14	5196.00	60.24
West Khasi Hills	1037.12	--	277.14	1229.96	2544.22	5247.00	48.50
Jaintia Hills	1669.21	--	82.18	550.75	2302.14	3819.00	60.28
East Garo Hills	--	--	468.60	277.06	745.66	2603.00	28.65
West Garo Hills & South Garo Hills	60.31	14.87	893.28	1.19	969.65	5564.00	17.43
TOTAL :	4190.63	14.87	1874.20	3612.11	9691.81	22429.00	43.21

**Source** : Wasteland Atlas of India prepared by the Ministry of Rural Development, Department of Land Resources in collaboration with the Natural Remote Sensing Agency.

**ANNEXURE – II**

**YEAR-WISE PHYSICAL AND FINANCIAL TARGETS FOR VARIOUS COMPONENTS**

(Rupees in lakhs)

Sl. No.	Component	1 <sup>st</sup> Year		2 <sup>nd</sup> Year		3 <sup>rd</sup> Year		4 <sup>th</sup> Year		5 <sup>th</sup> Year		TOTAL	
		Physical (in ha.)	Financial	Physical (in ha.)	Financial	Physical (in ha.)	Financial	Physical (in ha.)	Financial	Physical (in ha.)	Financial	Physical (in ha.)	Financial
1	2	3	4	5	6	7	8	9	10	11	12	13	14
1	Development of nursery plantation and maintenance @.Rs.30,000 per ha.	1000	300.00	1500	450.00	1500	450.00	1500	450.00	1500.00	450.00	7000	2100.00
2	Seed procurement centre	1	80.00	1	80.00							2	160.00
3	Transterification units			1	20.00	1	20.00					2	40.00
4.1	Trainers' Training	21	0.81									2	0.81
4.2	Farmers' Training	7	1.40			7	1.40			7	1.40	21	4.20
4.3	Publication & Publicity		0.50		0.50								1.00
5	Monitoring Evaluation & Technical support.				0.50		0.50		0.50		0.50		2.00
	TOTAL :		382.71		551.00		471.90		450.50		451.90		2308.01
7	Establishment Expenditure (%) .		19.13		27.55		23.59		22.52		22.59		115.38
	GRAND TOTAL :		401.84		578.55		495.49		473.02		474.49		2423.39

Rs.24,23,39,000/- (Rupees Twenty Four Crores Twenty Three Lakhs Thirty Nine Thousand)only

### **CONDEMNATION OF MACHINERIES DURING 2004-2005**

During 2004-2005, the Soil and Water Conservation Department had condemned 120 Power Tillers but till date the scraps have not yet been disposed. Following are the Divisions which have condemned the Power Tillers:-

1. Simsanggre Division	-	24 nos
2. Jowai (T) Division	-	24 nos
3. Tura (T) Division	-	56 nos
4. Nongstoin Division	-	16 nos

### **PURCHASE OF VEHICLE DURING 2004-2005**

During 2004-2005, 1 no Pick-up Van (Single cab) was purchased by the Department amounting to Rs. 4,09,293.00/- (Rupees Four lakhs nine thousand two hundred ninety three) only.

## OTHER ACTIVITIES

### **I. Celebration of World Environment Day: 5<sup>th</sup> June, 2004**

The following programmes were organized by the different Divisions of the Department to celebrate the World Environment Day on 5<sup>th</sup> June, 2004.

#### EAST KHASI HILLS

Programme: Tree planting and release of fingerlings

Place : Mawsmal Eco- Park, Cherrapunjee.

Chief Guest: Shri K.L.Tariang, IAS., Director of Soil and Water Conservation Officer.

Guest of Honour : Shri B.S.Sohliya, Sub-Divisional Officer (Civil), Sohra.

#### EAST GARO HILLS

Programme: Tree planting.

Place: Rongrengre Model Secondary School.

Chief Guest: Shri E.P.Kharbhih, IAS., Deputy Commissioner, East Garo Hills.

#### WEST KHASI HILLS

Programme: Tree planting, Release of Fingerlings and Debate Competition

Place: Government L.P.School, Nongpyndeng.

Chief Guest: Shri Donkumar Dkhar, IAS., Deputy Commissioner, West Khasi Hills.

Collaboration : Divisional Forest Officer, Social Forestry, Nongstoin.

#### JAINTIA HILLS

Programme: Public meeting and Tree planting.

Place: Mukhla Raj Secondary School, Mukhla.

Chief Guest: Shri S.Sari, MDC of Mukhla, Jaintia Hills.

Guest of Honour: Smti. B.Lamare, Inspector of Schools, Jaintia Hills District, Jowai.

Participants: Students, Members of the public, Senior Officers of various Government Departments and Elders of Mukhla Raj.

#### WEST GARO HILLS

Programme: Tree planting cum Awareness Programme.

Place: Kherapara Upper Primary School, West Garo Hills District.

Chief Guest: Shri W.D. Sangma, MCS, BDO, Gambegre Block.

Participants: Teachers and Students of Kherapara and Amongpara Schools.

#### RI-BHOI

Programme: Awareness campaign and release of fingerlings at the Community Pond under Umshyrku Watershed and Umbyrngaid Watershed.

Place: Ri-Bhoi Presbyterian School, Nongpoh.

#### C.T.I. BYRNIHAT

Programme: Tree planting.

Place: Arboretum area of the Institute Campus.

Participants: Officers, Instructors, Staff, Trainees and School Children.

## **II. Celebration of National Land Resources Conservation Week, 14<sup>th</sup> to 20<sup>th</sup> Nov, 2004.**

The National Land Resources Conservation Week, 2004 was observed from 14<sup>th</sup> to 20<sup>th</sup> Nov, 2004 in the State of Meghalaya. The observation of the week was organized by the Department in various villages in all the Districts of the State. Various programmes relating to the theme of the week were held and conducted by the Divisional Soil and Water Conservation Officer in selective areas falling within their jurisdiction which were as follows:-

7. Division : South Garo Hills, Soil and Water Conservation Division.  
Programme : Slogan and Poster Campaign depicting the importance of conservation of Natural Resources ; Public Awareness Campaign.  
Place: Guttinggre village, Rongmai Micro Watershed(IWDP)  
Date: 14<sup>th</sup> to 20<sup>th</sup> Nov. 2004  
Participants: Farmer communities of the Project Area and Department Officials
8. Division : Ri-Bhoi Soil and Water Conservation Division
  - ❖ Programme : Radio talk on the various activities of Soil and Water Conservation delivered by  
Shri A.B.Swer, Assistant Soil and Water Conservation.  
Date: 18<sup>th</sup> Nov, 2004.
  - ❖ Programme : Poster Campaign  
Place : Schools and Institutions in and around Nongpoh locality  
Date : 15<sup>th</sup> Nov, 2004.
  - ❖ Programme: Fishing Competition  
Place : Lailad (Umtrew River)  
Date : 20<sup>th</sup> Nov, 2004  
Organisers : Ri-Bhoi Soil and Water Conservation Division and Lailad Area River Protection and Development Association.  
Chief Guest : Shri J.D.Rymbai, Local M.L.A. and Minister i/c Taxation , etc.  
Guest of Honour : Shri W.L.Lyngdoh, Deputy Commissioner Ri-Bhoi.
9. Division : Jaintia Hills Soil and Water Conservation Division (T) and (CC)  
Programme: Cultural Programme.  
Place : Chiehruphi village.  
Date : 19<sup>th</sup> Nov, 2004  
Participants: 5 Groups from 5 Watershed Project Areas implemented under Lumshnong Soil and Water Conservation Range.
10. Division : Tura Soil and Water Conservation Division (T) and (CC).
  - ❖ Programme: Awareness Programme through display of Banners and Posters  
Place : Tura town ship.  
Date : 14<sup>th</sup> to 20<sup>th</sup> Nov, 2004
  - ❖ Programme : Talks on Television and Panel discussion.  
Participants : 3 (Three) Assistant Soil and Water Conservation Officers.
  - ❖ Programme : Awareness Campaign  
Place : Edenbari  
Date : 18<sup>th</sup> Nov, 2004.  
Chief Guest : Smti. S.N.Marak, Additional District Magistrate, West Garo Hills.  
Guest of Honour : Shri P.R.Marak, D.F.O. Social Forestry.
  - ❖ Division : Shillong Soil and Water Conservation Division (T) and (CC).
    - ❖ Programme: Essay Competition under the theme “Our Land Our Future”  
Participants ; Pre-Primary Students of Umrynjah, Umjathang and Mawsiatkhnem villages.



Date :16<sup>th</sup> to 24<sup>th</sup> Nov, 2004

❖ Programme : Cultural Programmes including Sports and Games.

Participants : Watershed Communities.

Date : 24<sup>th</sup> Nov, 2004

Chief Guest: Smti R.M.Kurbah, M.C.S., Project Director, DRDA, East Khasi Hills.

### III. SEEDLINGS DISTRIBUTION PROGRAMME

#### 1. Organizer : Simsangre Soil and Water Conservation Division under Cash Crop Development Scheme

❖ Date : 29<sup>th</sup> and 30<sup>th</sup> June 2004.

Place : WDPSCA Projects at Khera – Mikgilsingre villages

Chief Guest : Shri E.P.Kharbhih, I.A.S., Deputy Comissioner, East Garo Hills District.

❖ Place : Songsak - Bonegre

Chief Guest : Shri Clement Sangma, Songsak C & RD Block Chairman.

No. of Seedlings distributed on both occasions – 24,000 nos of Arecanut seedlings.

No. of beneficiaries : 522 nos.

❖ Place : Bajengdoba village.

Date : 25<sup>th</sup> June, 2004

Chief Guest : Shri S.R.Marak, M.C.S., SDO, Resubelpara Civil Sub Division.

No. of Seedlings distributed - 27,000 nos of Arecanut seedlings.

No. of beneficiaries : 206 nos..

❖ Places : Upper Chill, Upper Chibok, Thapa, Romphi, Gitting, Rongre and Ganing Watershed Projects (WDPSCA).

No. of Seedlings distributed– 42,000 nos of Arecanut seedlings.

#### 2. Organiser: Shillong Soil and Water Conservation Cash Crop Division.

❖ Place : Umsaw Nursery (created during 2002-2003)

Date July, 2004

No. of Seedlings distributed - 6000 nos of Temperate fruit saplings namely, Lagoon, William Pear, Naspati, Santa Rose and Peach.

No. of beneficiaries : 43 nos.

❖ Places : Nonglait Nursery (created in 2001-2002)

No. of Seedlings distributed– 35,123 nos of Arecanut seedlings and Citrus seedlings.

No. of beneficiaries : 100 nos.

#### 3. Organiser : Jowai Territorial Soil and Water Conservation Division, Jaintia Hills

❖ Place : Nongthymmai and Kairang villages which fall under Umpong Lower Watershed (IWDP)

Date: 20<sup>th</sup> July, 2004

No. of Seedlings distributed – 14,000 nos of Citrus and Temperate fruits.

No. of beneficiaries : 140 nos. of farmers.

❖ Place : Villages of Pamiong Watershed, Musiang – Lamare (old) Umslong Watershed, Musiang – Lamare (new) (Thwai Tyrso) and Umrasiang (Umjri) Watershed all under IWDP.

No. of Seedlings distributed– 52,000 nos of Citrus and Temperate fruit seedlings.

No. of beneficiaries : 231 nos.

Date : 22<sup>nd</sup> July, 2004.

- ❖ Place : Mynktung and Mulieh villages (Upper Mynktung Watershed), Madankynsaw and Mookyndeng villages (Middle Mynktung Watershed), both villages under IWDP.  
No. of Seedlings distributed – 45,000 nos .  
Beneficiaries : Farmers of the above villages.
- ❖ Place : Moopyut, Madantyrpait and Skhen Pysit villages (Amrayang – Umshyrpu Watershed) of IWDP.  
No. of Seedlings distributed– 25,000 nos.  
Beneficiaries : Farmers of the above villages.

#### **IV. INAUGURATION**

The Office of the Divisional Soil and Water Conservation Officer, Shillong (T) Division inaugurated the Syntiew Rit Mini Park at Umrynjah village under WDPSCA. The chief guest on the occasion was Shri P.T.Sawkmie, M.L.A. and Co-Chairman of Meghalaya State Planning Board and the guest of Honour was Shri D.P.Wahlang, IAS, Deputy Commissioner, East Khasi Hills and Chairman District Watershed Development Committee (DWDC).

#### **V. CONVOCATION**

The convocation of the 31<sup>st</sup> batch trainees of Field Assistant Course was held at the Conservation Training Institute, Byrnihat on the 15<sup>th</sup> September, 2004. Altogether 17 (Seventeen) nos of trainees passed out during the year.

The chief guest of the function was the Ex-Hon'ble Minister of Soil and Water Conservation, (L) Shri C.R. Sangma who distributed the certificates and awards to the successful candidates. Shri G.P.Wahlang, I.A.S., Principal Secretary to the Government of Meghalaya also spoke on the occasion.

#### **VI. PRE-CHRISTMAS CELEBRATION.**

The Directorate of Soil and Water Conservation, Shillong, organized a Pre-Christmas Service at the Departmental premises at Cleve Colony, Shillong. A charitable programme was also organized for the next of kin of those Department personnels who expired while in service by presenting them with Gift hampers. The message was delivered by Rev W.C.Khongwir, Administrative Secretary PCCI.

#### **VII. SOIL AND WATER CONSERVATION DIRECTOR ELEVATED AS INDIAN ADMINISTRATIVE SERVICE (IAS) OFFICER**

On the 29<sup>th</sup> October, 2004, Shri K.L.Tariang, Director of Soil and Water Conservation was selected to the Indian Administrative Service. He holds the dual responsibility as Director of Soil and Water Conservation and Joint Secretary to the Government of Meghalaya, Soil and Water Conservation Department.